

Product Name: Phospho-CDC37 (Ser13) Rabbit Monoclonal Antibody**Catalog #: AMRe84891**

For research use only.

Summary

Description	Recombinant rabbit monoclonal antibody
Host	Rabbit
Application	WB,IP
Reactivity	Human,Mouse,Rat
Conjugation	Unconjugated
Modification	Phosphorylated
Isotype	IgG
Clonality	Monoclonal
Form	Liquid
Concentration	0.5mg/ml. The concentration of this product may be batch-dependent.
Storage	Aliquot and store at -20°C (valid for 12 months). Avoid freeze/thaw cycles.
Shipping	Ice bags
Buffer	Purified antibody in TBS with 0.05% sodium azide,0.05%protective protein and 50% glycerol.
Purification	Affinity Purification

Application

Dilution Ratio	WB 1:500-1:1000,IP 1:10-1:20
Molecular Weight	Calculated MW: 44 kDa; Observed MW: 44 kDa

Antigen Information

Gene Name	Phospho-CDC37 (Ser13)
Alternative Names	CDC37; CDC37A; Hsp90 co-chaperone Cdc37; Hsp90 chaperone protein kinase-targeting subunit; p50Cdc37
Gene ID	11140.0
SwissProt ID	Q16543
Immunogen	A synthetic phosphopeptide corresponding to residues surrounding Ser13 of human Cdc37

Background

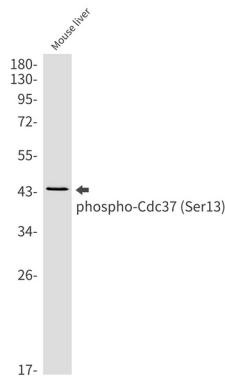
CDC37 is an important component of the HSP90 chaperone complex. It was initially identified for its involvement in cell-cycle progression and was later found to have a much broader role as a chaperone for a wide variety of kinases and other proteins.

CDC37 protein has an amino-terminal kinase binding domain followed by a central HSP90 binding domain.

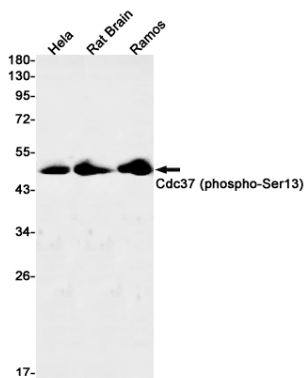
Research Area

PI3K-Akt signaling pathway

Image Data



Western blot analysis of Phospho-Cdc37 (Ser13) in mouse liver lysates using Phospho-CDC37 (Ser13) antibody.



Western blot analysis of Cdc37 (Phospho-Ser13) in HeLa, rat Brain, Ramos lysates using Cdc37 (Phospho-Ser13) antibody.