
Product Name: Phospho-Tau (Thr50) Rabbit Monoclonal Antibody**Catalog #: AMRe84883**

For research use only.

Summary

Description	Recombinant rabbit monoclonal antibody
Host	Rabbit
Application	WB,ICC,IP
Reactivity	Human
Conjugation	Unconjugated
Modification	Phosphorylated
Isotype	IgG
Clonality	Monoclonal
Form	Liquid
Concentration	0.5mg/ml. The concentration of this product may be batch-dependent.
Storage	Aliquot and store at -20°C (valid for 12 months). Avoid freeze/thaw cycles.
Shipping	Ice bags
Buffer	Purified antibody in TBS with 0.05% sodium azide,0.05%protective protein and 50% glycerol.
Purification	Affinity Purification

Application

Dilution Ratio	WB 1:500-1:1000,ICC 1:50-1:200,IP 1:10-1:20
Molecular Weight	Calculated MW: 79 kDa; Observed MW: 50-80 kDa

Antigen Information

Gene Name	Phospho-Tau (Thr50)
Alternative Names	MAPT; MAPTL; MTBT1; TAU; Microtubule-associated protein tau; Neurofibrillary tangle protein; Paired helical filament-tau; PHF-tau
Gene ID	4137.0
SwissProt ID	P10636
Immunogen	A synthetic phosphopeptide corresponding to residues surrounding Thr50 of human Tau

Background

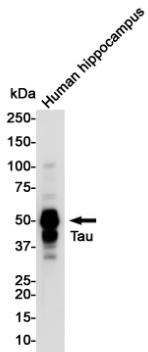
This gene encodes the microtubule-associated protein tau (MAPT) whose transcript undergoes complex, regulated alternative splicing, giving rise to several mRNA species. MAPT transcripts are differentially expressed in the nervous system, depending

on stage of neuronal maturation and neuron type.

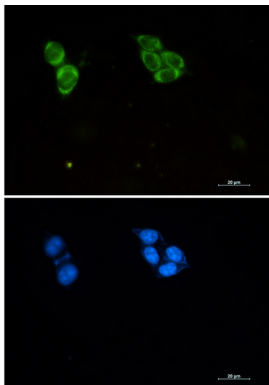
Research Area

MAPK signaling pathway

Image Data



Western blot analysis of Tau (Phospho-Thr50) in Human Hippocampus lysates using Tau (Phospho-Thr50) antibody.



Immunocytochemistry analysis of Phospho-Tau (Thr50) (green) in HCT116 using Phospho-Tau (Thr50) antibody, and DAPI (blue).