
Product Name: Phospho-Rb2 p130 (Ser952) Rabbit Monoclonal Antibody**Catalog #: AMRe84880**

For research use only.

Summary

Description	Recombinant rabbit monoclonal antibody
Host	Rabbit
Application	WB,IHC,ICC
Reactivity	Human
Conjugation	Unconjugated
Modification	Phosphorylated
Isotype	IgG
Clonality	Monoclonal
Form	Liquid
Concentration	0.5mg/ml. The concentration of this product may be batch-dependent.
Storage	Aliquot and store at -20°C (valid for 12 months). Avoid freeze/thaw cycles.
Shipping	Ice bags
Buffer	Purified antibody in TBS with 0.05% sodium azide,0.05%protective protein and 50% glycerol.
Purification	Affinity Purification

Application

Dilution Ratio	WB 1:500-1:1000,IHC 1:50-1:100,ICC 1:50-1:200
Molecular Weight	Calculated MW: 128 kDa; Observed MW: 128 kDa

Antigen Information

Gene Name	Phospho-Rb2 p130 (Ser952)
Alternative Names	Rb2; P130
Gene ID	5934.0
SwissProt ID	Q08999
Immunogen	A synthetic phosphopeptide corresponding to residues surrounding Ser952 of human Rb2 p130

Background

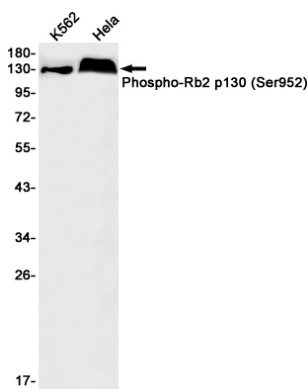
Key regulator of entry into cell division. Directly involved in heterochromatin formation by maintaining overall chromatin structure and, in particular, that of constitutive heterochromatin by stabilizing histone methylation. Recruits and targets histone

methyltransferases KMT5B and KMT5C, leading to epigenetic transcriptional repression. Controls histone H4 'Lys-20' trimethylation. Probably acts as a transcription repressor by recruiting chromatin-modifying enzymes to promoters. Potent inhibitor of E2F-mediated trans-activation, associates preferentially with E2F5. Binds to cyclins A and E. Binds to and may be involved in the transforming capacity of the adenovirus E1A protein. May act as a tumor suppressor.

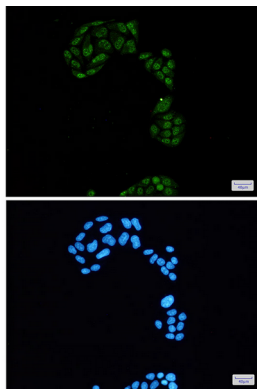
Research Area

PI3K-Akt signaling pathway

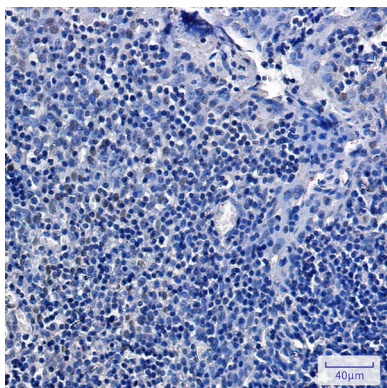
Image Data



Western blot analysis of Rb2 p130 (Phospho-Ser952) in K562, HeLa lysates using Phospho-Rb2 p130 (Ser952) antibody.



Immunocytochemistry analysis of Rb2 p130 (Phospho-Ser952)(green) in HeLa using Rb2 p130 (Phospho-Ser952) antibody, and DAPI(blue)



Immunohistochemistry analysis of paraffin-embedded Human tonsil using Rb2 p130 (Phospho-Ser952) antibody. High-pressure and temperature Sodium Citrate pH 6.0 was used for antigen retrieval.