
Product Name: Phospho-Rb (Ser780) Rabbit Monoclonal Antibody**Catalog #: AMRe84879**

For research use only.

Summary

Description	Recombinant rabbit monoclonal antibody
Host	Rabbit
Application	WB,IP
Reactivity	Human,Rat
Conjugation	Unconjugated
Modification	Phosphorylated
Isotype	IgG
Clonality	Monoclonal
Form	Liquid
Concentration	0.5mg/ml. The concentration of this product may be batch-dependent.
Storage	Aliquot and store at -20°C (valid for 12 months). Avoid freeze/thaw cycles.
Shipping	Ice bags
Buffer	Purified antibody in TBS with 0.05% sodium azide,0.05%protective protein and 50% glycerol.
Purification	Affinity Purification

Application

Dilution Ratio	WB 1:500-1:1000,IP 1:10-1:20
Molecular Weight	Calculated MW: 106 kDa; Observed MW: 110 kDa

Antigen Information

Gene Name	Phospho-Rb (Ser780)
Alternative Names	RB1; Retinoblastoma-associated protein; p105-Rb; pRb; Rb; pp110
Gene ID	5925.0
SwissProt ID	P06400
Immunogen	A synthetic phosphopeptide corresponding to residues surrounding Ser780 of human Rb

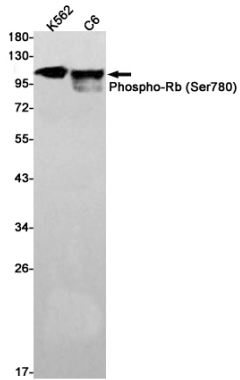
Background

Cell cycle-dependent phosphorylation by a CDK inhibits Rb target binding and allows cell cycle progression. Rb inactivation and subsequent cell cycle progression likely requires an initial phosphorylation by cyclin D-CDK4/6 followed by cyclin E-CDK2 phosphorylation. Specificity of different CDK/cyclin complexes has been observed in vitro and cyclin D1 is required for Ser780

phosphorylation in vivo.

Research Area

Image Data



Western blot analysis of Phospho-Rb (Ser780) in K562, C6 lysates using Phospho-Rb (Ser780) antibody.