

**Product Name: Phospho-PRC1 (Thr481) Rabbit Monoclonal Antibody****Catalog #: AMRe84877**

For research use only.

**Summary**

<b>Description</b>	Recombinant rabbit monoclonal antibody
<b>Host</b>	Rabbit
<b>Application</b>	WB,IHC,ICC
<b>Reactivity</b>	Human
<b>Conjugation</b>	Unconjugated
<b>Modification</b>	Phosphorylated
<b>Isotype</b>	IgG
<b>Clonality</b>	Monoclonal
<b>Form</b>	Liquid
<b>Concentration</b>	0.5mg/ml. The concentration of this product may be batch-dependent.
<b>Storage</b>	Aliquot and store at -20°C (valid for 12 months). Avoid freeze/thaw cycles.
<b>Shipping</b>	Ice bags
<b>Buffer</b>	Purified antibody in TBS with 0.05% sodium azide,0.05%protective protein and 50% glycerol.
<b>Purification</b>	Affinity Purification

**Application**

<b>Dilution Ratio</b>	WB 1:500-1:1000,IHC 1:50-1:100,ICC 1:50-1:200
<b>Molecular Weight</b>	Calculated MW: 72 kDa; Observed MW: 72 kDa

**Antigen Information**

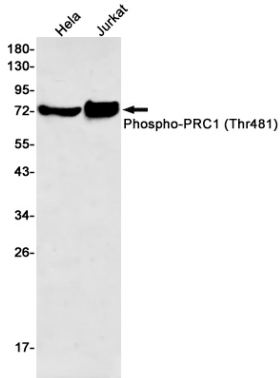
<b>Gene Name</b>	Phospho-PRC1 (Thr481)
<b>Alternative Names</b>	Protein regulator of cytokinesis 1
<b>Gene ID</b>	9055.0
<b>SwissProt ID</b>	O43663
<b>Immunogen</b>	A synthetic phosphopeptide corresponding to residues surrounding Thr481 of human PRC1

**Background**

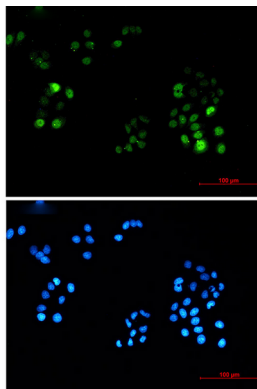
Cross-links antiparallel microtubules at an average distance of 35 nM. Essential for controlling the spatiotemporal formation of the midzone and successful cytokinesis. Required for KIF14 localization to the central spindle and midbody.

## Research Area

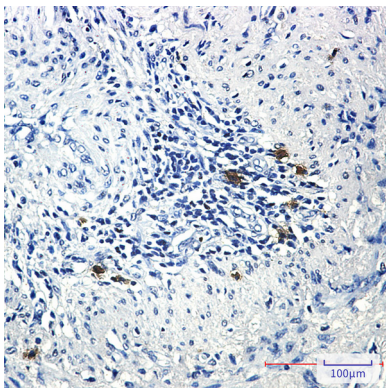
### Image Data



Western blot analysis of Phospho-PRC1 (Thr481) in HeLa, Jurkat lysates using Phospho-PRC1 (Thr481) antibody.



Immunocytochemistry analysis of Phospho-PRC1 (Thr481) (green) in HeLa using Phospho-PRC1 (Thr481) antibody, and DAPI (blue)



Immunohistochemistry analysis of paraffin-embedded Human lung cancer using PRC1 (Phospho-Thr481) antibody. High-pressure and temperature Sodium Citrate pH 6.0 was used for antigen retrieval.