
Product Name: Phospho-Parvin alpha (Ser8) Rabbit Monoclonal Antibody**Catalog #: AMRe84872**

For research use only.

Summary

Description	Recombinant rabbit monoclonal antibody
Host	Rabbit
Application	WB,ICC
Reactivity	Human,Mouse,Rat
Conjugation	Unconjugated
Modification	Phosphorylated
Isotype	IgG
Clonality	Monoclonal
Form	Liquid
Concentration	0.5mg/ml. The concentration of this product may be batch-dependent.
Storage	Aliquot and store at -20°C (valid for 12 months). Avoid freeze/thaw cycles.
Shipping	Ice bags
Buffer	Purified antibody in TBS with 0.05% sodium azide,0.05%protective protein and 50% glycerol.
Purification	Affinity Purification

Application

Dilution Ratio	WB 1:500-1:1000,ICC 1:50-1:200
Molecular Weight	Calculated MW: 42 kDa; Observed MW: 42 kDa

Antigen Information

Gene Name	Phospho-Parvin alpha (Ser8)
Alternative Names	MXRA2; CH-ILKBP
Gene ID	55742.0
SwissProt ID	Q9NVD7
Immunogen	A synthetic phosphopeptide corresponding to residues surrounding Ser8 of human Parvin alpha

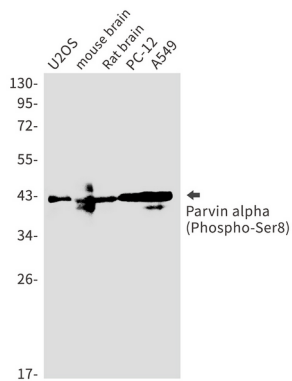
Background

Plays a role in sarcomere organization and in smooth muscle cell contraction. Required for normal development of the embryonic cardiovascular system, and for normal septation of the heart outflow tract. Plays a role in sprouting angiogenesis

and is required for normal adhesion of vascular smooth muscle cells to endothelial cells during blood vessel development . Plays a role in the reorganization of the actin cytoskeleton, formation of lamellipodia and ciliogenesis. Plays a role in the establishment of cell polarity, cell adhesion, cell spreading, and directed cell migration.

Research Area

Image Data



Western blot analysis of Parvin alpha (Phospho-Ser8) in U2OS, mouse brain, rat brain, PC-12, A549 lysates using Phospho-Parvin alpha (Ser8) antibody.