

Product Name: Phospho-mTOR (Ser2448) Rabbit Monoclonal Antibody**Catalog #: AMRe84868**

For research use only.

Summary

Description	Recombinant rabbit monoclonal antibody
Host	Rabbit
Application	WB,IHC
Reactivity	Human,Mouse
Conjugation	Unconjugated
Modification	Phosphorylated
Isotype	IgG
Clonality	Monoclonal
Form	Liquid
Concentration	0.5mg/ml. The concentration of this product may be batch-dependent.
Storage	Aliquot and store at -20°C (valid for 12 months). Avoid freeze/thaw cycles.
Shipping	Ice bags
Buffer	Purified antibody in TBS with 0.05% sodium azide,0.05%protective protein and 50% glycerol.
Purification	Affinity Purification

Application

Dilution Ratio	WB 1:500-1:1000,IHC 1:50-1:100
Molecular Weight	Calculated MW: 289 kDa; Observed MW: 289 kDa

Antigen Information

Gene Name	Phospho-mTOR (Ser2448) MTOR; FRAP; FRAP1; FRAP2; RAFT1; RAPT1; Serine/threonine-protein kinase mTOR; FK506-
Alternative Names	binding protein 12-rapamycin complex-associated protein 1; FKBP12-rapamycin complex-associated protein; Mammalian target of rapamycin; mTOR; Mechanistic tar
Gene ID	2475.0
SwissProt ID	P42345
Immunogen	A synthetic phosphopeptide corresponding to residues surrounding Ser2448 of human mTOR

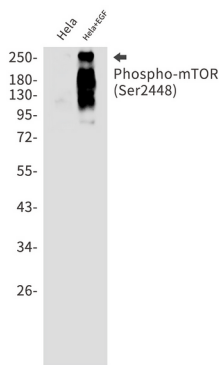
Background

An atypical kinase belonging to the PIKK family of kinases. Controls cell growth through protein synthesis regulation. Downstream of PI3K/Akt pathway and required for cell survival. Acts as the target for the cell-cycle arrest and immunosuppressive effects of the FKBP12-rapamycin complex.

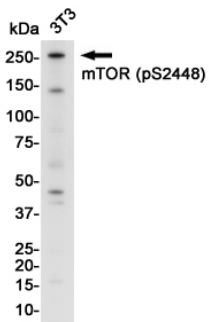
Research Area

PI3K-Akt signaling pathway, mTOR signaling pathway, Jak-STAT signaling pathway, Hippo signaling pathway

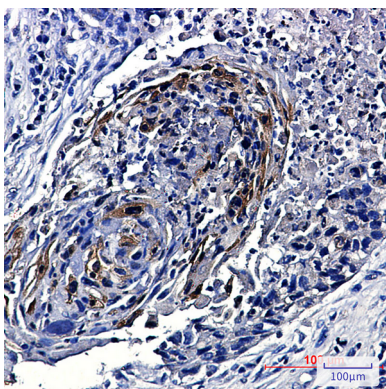
Image Data



Western blot analysis of Phospho-mTOR (Ser2448) in HeLa, HeLa+EGF lysates using Phospho-mTOR (Ser2448) antibody.



Western blot analysis of mTOR (Phospho-Ser2448) in 3T3 lysates using mTOR (Phospho-Ser2448) antibody.



Immunohistochemistry analysis of paraffin-embedded Human lung cancer using Phospho-mTOR (Ser2448) antibody. High-pressure and temperature Sodium Citrate pH 6.0 was used for antigen retrieval.