

Product Name: Phospho-EGFR (Tyr1068) Rabbit Monoclonal Antibody
Catalog #: AMRe84863

Summary

Production Name	Phospho-EGFR (Tyr1068) Rabbit Monoclonal Antibody
Description	Rabbit Monoclonal antibody
Host	Rabbit
Application	WB,IHC,ICC
Reactivity	Human

Performance

Conjugation	Unconjugated
Modification	Phosphorylated
Isotype	IgG
Clonality	Monoclonal
Form	Liquid
Storage	Store at 4°C short term. Aliquot and store at -20°C long term. Avoid freeze/thaw cycles.
Buffer	Purified antibody in TBS with 0.05% sodium azide,0.05%protective protein and 50% glycerol.
Purification	Affinity Purification

Immunogen

Gene Name	Phospho-EGFR (Tyr1068)
Alternative Names	EGFR; ERBB; ERBB1; HER1; Epidermal growth factor receptor; Proto-oncogene c-ErbB-1; Receptor tyrosine-protein kinase erbB-1
Gene ID	1956.0
SwissProt ID	P00533. A synthetic phosphopeptide corresponding to residues surrounding Tyr1068 of human EGFR

Application

Dilution Ratio	WB:1:500-1:1000,IHC:1:50-1:100,ICC:1:50-1:200
Molecular Weight	Calculated MW: 134 kDa; Observed MW: 175 kDa

**Product Name: Phospho-EGFR (Tyr1068) Rabbit
Monoclonal Antibody
Catalog #: AMRe84863**



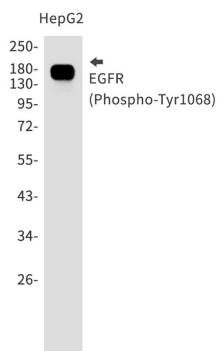
Background

EGFR is a receptor tyrosine kinase. Receptor for epidermal growth factor (EGF) and related growth factors including TGF- α , amphiregulin, betacellulin, heparin-binding EGF-like growth factor, GP30 and vaccinia virus growth factor. Is involved in the control of cell growth and differentiation. . A single-pass transmembrane tyrosine kinase. Ligand binding to this receptor results in receptor dimerization, autophosphorylation (in trans), activation of various downstream signaling molecules and lysosomal degradation.

Research Area

TGF- β signaling pathway, PI3K-Akt signaling pathway, MAPK signaling pathway, Jak-STAT signaling pathway, Hippo signaling pathway

Image Data



Western blot analysis of EGFR (Phospho-Tyr1068) in HepG2 lysates using Phospho-EGFR (Tyr1068) antibody.

Note

For research use only.