

**Product Name: Phospho-Dishevelled 2 (Ser143) Rabbit
Monoclonal Antibody
Catalog #: AMRe84862**



Summary

Production Name	Phospho-Dishevelled 2 (Ser143) Rabbit Monoclonal Antibody
Description	Rabbit Monoclonal antibody
Host	Rabbit
Application	WB
Reactivity	Human,Mouse

Performance

Conjugation	Unconjugated
Modification	Phosphorylated
Isotype	IgG
Clonality	Monoclonal
Form	Liquid
Storage	Store at 4°C short term. Aliquot and store at -20°C long term. Avoid freeze/thaw cycles.
Buffer	Purified antibody in TBS with 0.05% sodium azide, 0.05% protective protein and 50% glycerol.
Purification	Affinity Purification

Immunogen

Gene Name	Phospho-Dishevelled 2 (Ser143)
Alternative Names	DSH homolog 2
Gene ID	1856.0
SwissProt ID	O14641. A synthetic phosphopeptide corresponding to residues surrounding Ser143 of human Dishevelled 2

Application

Dilution Ratio	WB:1:500-1:1000
Molecular Weight	Calculated MW: 79 kDa; Observed MW: 90-95 kDa

**Product Name: Phospho-Dishevelled 2 (Ser143) Rabbit
Monoclonal Antibody
Catalog #: AMRe84862**



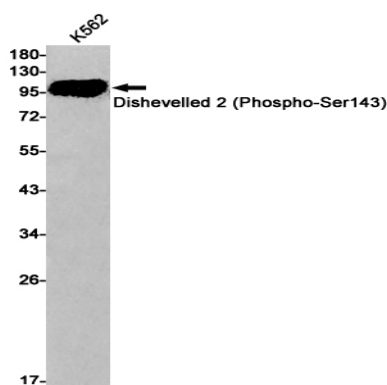
Background

Plays a role in the signal transduction pathways mediated by multiple Wnt genes. Participates both in canonical and non-canonical Wnt signaling by binding to the cytoplasmic C-terminus of frizzled family members and transducing the Wnt signal to down-stream effectors. Promotes internalization and degradation of frizzled proteins upon Wnt signaling.

Research Area

Wnt signaling pathway

Image Data



Western blot analysis of Dishevelled 2 (Phospho-Ser143) in K562 lysates using Phospho-Dishevelled 2 (Ser143) antibody.

Note

For research use only.