
Product Name: Phospho-MDM2 (Ser166) Rabbit Monoclonal Antibody**Catalog #: AMRe84848**

For research use only.

Summary

Description	Recombinant rabbit monoclonal antibody
Host	Rabbit
Application	WB,IHC
Reactivity	Human,Rat
Conjugation	Unconjugated
Modification	Phosphorylated
Isotype	IgG
Clonality	Monoclonal
Form	Liquid
Concentration	0.5mg/ml. The concentration of this product may be batch-dependent.
Storage	Aliquot and store at -20°C (valid for 12 months). Avoid freeze/thaw cycles.
Shipping	Ice bags
Buffer	Purified antibody in TBS with 0.05% sodium azide,0.05%protective protein and 50% glycerol.
Purification	Affinity Purification

Application

Dilution Ratio	WB 1:500-1:1000,IHC 1:50-1:100
Molecular Weight	Calculated MW: 55 kDa; Observed MW: 90 kDa

Antigen Information

Gene Name	Phospho-MDM2 (Ser166)
Alternative Names	Double minute 2 protein; Hdm2; Oncoprotein Mdm2
Gene ID	4193.0
SwissProt ID	Q00987
Immunogen	A synthetic phosphopeptide corresponding to residues surrounding Ser166 of human MDM2

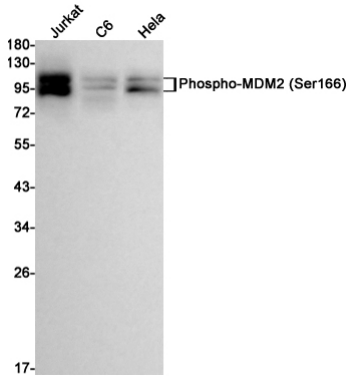
Background

E3 ubiquitin-protein ligase that mediates ubiquitination of p53/TP53, leading to its degradation by the proteasome.

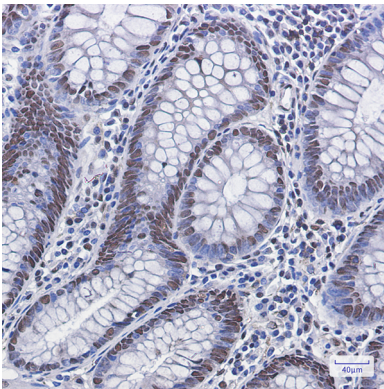
Research Area

Apoptosis, PI3K-Akt signaling pathway

Image Data



Western blot analysis of Phospho-MDM2 (Ser166) in Jurkat, C6, HeLa lysates using Phospho-MDM2 (Ser166) antibody.



Immunohistochemistry analysis of paraffin-embedded Human colon cancer using Phospho-MDM2 (Ser166) antibody. High-pressure and temperature Sodium Citrate pH 6.0 was used for antigen retrieval.