

Product Name: Phospho-4E BP1 (Thr46) Rabbit Monoclonal Antibody**Catalog #: AMRe84841**

For research use only.

Summary

Description	Recombinant rabbit monoclonal antibody
Host	Rabbit
Application	WB,IHC,IP
Reactivity	Human,Mouse,Rat
Conjugation	Unconjugated
Modification	Phosphorylated
Isotype	IgG
Clonality	Monoclonal
Form	Liquid
Concentration	0.5mg/ml. The concentration of this product may be batch-dependent.
Storage	Aliquot and store at -20°C (valid for 12 months). Avoid freeze/thaw cycles.
Shipping	Ice bags
Buffer	Purified antibody in TBS with 0.05% sodium azide,0.05%protective protein and 50% glycerol.
Purification	Affinity Purification

Application

Dilution Ratio	WB 1:500-1:1000,IHC 1:50-1:100,IP 1:10-1:20
Molecular Weight	Calculated MW: 13 kDa; Observed MW: 15-20 kDa

Antigen Information

Gene Name	Phospho-4E BP1 (Thr46)
Alternative Names	EIF4EBP1; Eukaryotic translation initiation factor 4E-binding protein 1; 4E-BP1; eIF4E-binding protein 1; Phosphorylated heat- and acid-stable protein regulated by insulin 1; PHAS-I
Gene ID	1978.0
SwissProt ID	Q13541
Immunogen	A synthetic phosphopeptide corresponding to residues surrounding Thr45 of human eIF4EBP1

Background

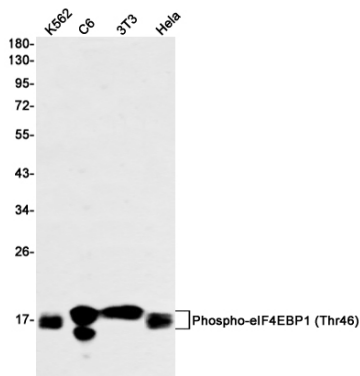
Translation repressor protein 4E-BP1 (also known as PHAS-1) inhibits cap-dependent translation by binding to the translation

initiation factor eIF4E. Hyperphosphorylation of 4E-BP1 disrupts this interaction and results in activation of cap-dependent translation. Both the PI3 kinase/Akt pathway and FRAP/mTOR kinase regulate 4E-BP1 activity.

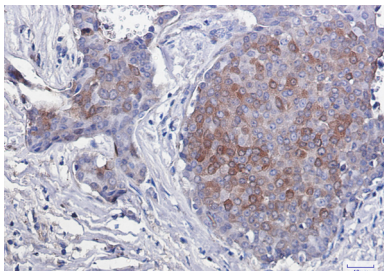
Research Area

PI3K-Akt signaling pathway, mTOR signaling pathway

Image Data



Western blot analysis of Phospho-eIF4EBP1 (Thr46) in K562, C6, 3T3, HeLa lysates using Phospho-4E BP1 (Thr46) antibody.



Immunohistochemistry analysis of paraffin-embedded Human breast cancer using eIF4EBP1/eIF4EBP2/eIF4EBP3 (Phospho-T45) antibody. High-pressure and temperature Sodium Citrate pH 6.0 was used for antigen retrieval.