
Product Name: Phospho-PTP1B (Ser352) Rabbit Monoclonal Antibody**Catalog #: AMRe84839**

For research use only.

Summary

Description	Recombinant rabbit monoclonal antibody
Host	Rabbit
Application	WB, ICC, IP
Reactivity	Human
Conjugation	Unconjugated
Modification	Phosphorylated
Isotype	IgG
Clonality	Monoclonal
Form	Liquid
Concentration	0.5mg/ml. The concentration of this product may be batch-dependent.
Storage	Aliquot and store at -20°C (valid for 12 months). Avoid freeze/thaw cycles.
Shipping	Ice bags
Buffer	Purified antibody in TBS with 0.05% sodium azide, 0.05% protective protein and 50% glycerol.
Purification	Affinity Purification

Application

Dilution Ratio	WB 1:500-1:1000, ICC 1:50-1:200, IP 1:10-1:20
Molecular Weight	Calculated MW: 50 kDa; Observed MW: 50 kDa

Antigen Information

Gene Name	Phospho-PTP1B (Ser352)
Alternative Names	PTPN1; PTP1B; Tyrosine-protein phosphatase non-receptor type 1; Protein-tyrosine phosphatase 1B; PTP-1B
Gene ID	5770.0
SwissProt ID	P18031
Immunogen	A synthetic phosphopeptide corresponding to residues surrounding Ser352 of human PTP1B

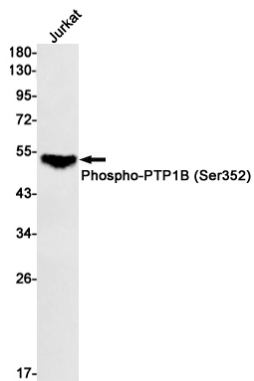
Background

The protein encoded by this gene is the founding member of the protein tyrosine phosphatase (PTP) family, which was isolated and identified based on its enzymatic activity and amino acid sequence. PTPs catalyze the hydrolysis of the phosphate

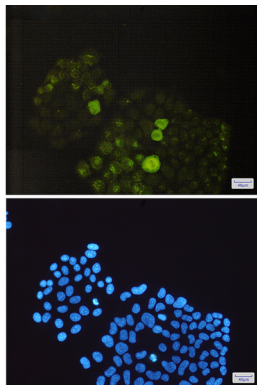
monoesters specifically on tyrosine residues.

Research Area

Image Data



Western blot analysis of Phospho-PTP1B (Ser352) in Jurkat lysates using Phospho-PTP1B (Ser352) antibody.



Immunocytochemistry analysis of Phospho-PTP1B (Ser352)(green) in HeLa using Phospho-PTP1B (Ser352) antibody, and DAPI(blue)