

**Product Name: Phospho-Presenilin 1 (Ser310) Rabbit  
Monoclonal Antibody  
Catalog #: AMRe84836**

---



## Summary

<b>Production Name</b>	Phospho-Presenilin 1 (Ser310) Rabbit Monoclonal Antibody
<b>Description</b>	Rabbit Monoclonal antibody
<b>Host</b>	Rabbit
<b>Application</b>	WB
<b>Reactivity</b>	Human

## Performance

<b>Conjugation</b>	Unconjugated
<b>Modification</b>	Phosphorylated
<b>Isotype</b>	IgG
<b>Clonality</b>	Monoclonal
<b>Form</b>	Liquid
<b>Storage</b>	Store at 4°C short term. Aliquot and store at -20°C long term. Avoid freeze/thaw cycles.
<b>Buffer</b>	Purified antibody in TBS with 0.05% sodium azide, 0.05% protective protein and 50% glycerol.
<b>Purification</b>	Affinity Purification

## Immunogen

<b>Gene Name</b>	Phospho-Presenilin 1 (Ser310)
<b>Alternative Names</b>	PSEN1; AD3; PS1; PSNL1; Presenilin-1; PS-1; Protein S182
<b>Gene ID</b>	5663.0
<b>SwissProt ID</b>	P49768. A synthetic phosphopeptide corresponding to residues surrounding Ser310 of human Presenilin 1

## Application

<b>Dilution Ratio</b>	WB:1:500-1:1000
<b>Molecular Weight</b>	Calculated MW: 53 kDa; Observed MW: 22 kDa

**Product Name: Phospho-Presenilin 1 (Ser310) Rabbit  
Monoclonal Antibody**  
**Catalog #: AMRe84836**



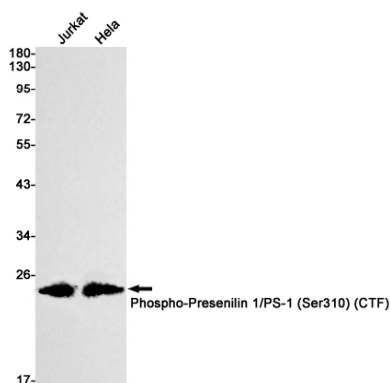
## Background

Probable catalytic subunit of the gamma-secretase complex, an endoprotease complex that catalyzes the intramembrane cleavage of integral membrane proteins such as Notch receptors and APP (beta-amyloid precursor protein). Requires the other members of the gamma-secretase complex to have a protease activity.

## Research Area

Apoptosis, Notch signaling pathway

## Image Data



Western blot analysis of Phospho-Presenilin 1/PS1 (Ser310) in Jurkat, HeLa lysates using Phospho-Presenilin 1 (Ser310) antibody.

## Note

For research use only.