

Product Name: Phospho-MSK1 (Ser360) Rabbit Monoclonal Antibody**Catalog #: AMRe84834**

For research use only.

Summary

Description	Recombinant rabbit monoclonal antibody
Host	Rabbit
Application	WB, ICC, IP
Reactivity	Human, Mouse, Rat, Hamster
Conjugation	Unconjugated
Modification	Phosphorylated
Isotype	IgG
Clonality	Monoclonal
Form	Liquid
Concentration	0.5mg/ml. The concentration of this product may be batch-dependent.
Storage	Aliquot and store at -20°C (valid for 12 months). Avoid freeze/thaw cycles.
Shipping	Ice bags
Buffer	Purified antibody in TBS with 0.05% sodium azide, 0.05% protective protein and 50% glycerol.
Purification	Affinity Purification

Application

Dilution Ratio	WB 1:500-1:1000, ICC 1:50-1:200, IP 1:10-1:20
Molecular Weight	Calculated MW: 90 kDa; Observed MW: 90 kDa

Antigen Information

Gene Name	Phospho-MSK1 (Ser360) RPS6KA5; MSK1; Ribosomal protein S6 kinase alpha-5; S6K-alpha-5; 90 kDa ribosomal
Alternative Names	protein S6 kinase 5; Nuclear mitogen- and stress-activated protein kinase 1; RSK-like protein kinase; RSKL
Gene ID	9252.0
SwissProt ID	O75582
Immunogen	A synthetic phosphopeptide corresponding to residues surrounding Ser360 of human MSK1

Background

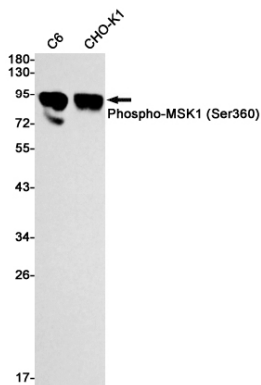
Serine/threonine-protein kinase that is required for the mitogen or stress-induced phosphorylation of the transcription factors

CREB1 and ATF1 and for the regulation of the transcription factors RELA, STAT3 and ETV1/ER81, and that contributes to gene activation by histone phosphorylation and functions in the regulation of inflammatory genes. Phosphorylates CREB1 and ATF1 in response to mitogenic or stress stimuli such as UV-C irradiation, epidermal growth factor (EGF) and anisomycin.

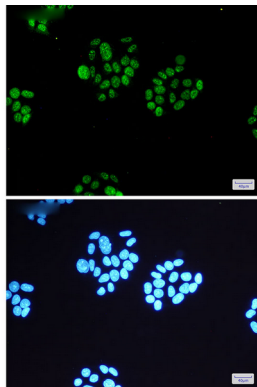
Research Area

MAPK signaling pathway

Image Data



Western blot analysis of Phospho-MSK1 (Ser360) in C6, CHO-K1 lysates using Phospho-MSK1 (Ser360) antibody.



Immunocytochemistry analysis of MSK1 (Phospho-S360)(green) in HeLa using MSK1 (Phospho-S360) antibody, and DAPI(blue)