
Product Name: RPL10A Rabbit Monoclonal Antibody**Catalog #: AMRe84812**

For research use only.

Summary

Description	Recombinant rabbit monoclonal antibody
Host	Rabbit
Application	WB,IHC,ICC/IF,ICC,FC
Reactivity	Human,Mouse,Rat
Conjugation	Unconjugated
Modification	Unmodified
Isotype	IgG
Clonality	Monoclonal
Form	Liquid
Concentration	
Storage	Aliquot and store at -20°C (valid for 12 months). Avoid freeze/thaw cycles.
Shipping	Ice bags
Buffer	Purified antibody in PBS with 0.05% sodium azide,0.05% protective protein and 50% glycerol.
Purification	Affinity Purification

Application

Dilution Ratio	WB 1:1000-1:2000,IHC 1:100-1:200,ICC/IF 1:50-1:200,ICC 1:50-1:200,FC 1:20-1:100
Molecular Weight	25 kDa

Antigen Information

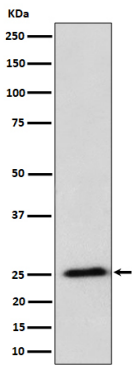
Gene Name	RPL10A
Alternative Names	CSA19; L10A; NEDD6; rpl10a;;RPL10A
Gene ID	
SwissProt ID	P62906
Immunogen	A synthesized peptide derived from human RPL10A

Background

Component of the large ribosomal subunit.

Research Area

Image Data



Western blot analysis of RPL10A expression in HeLa cell lysate.