
Product Name: TAPP1 Rabbit Monoclonal Antibody**Catalog #: AMRe84809**

For research use only.

Summary

Description	Recombinant rabbit monoclonal antibody
Host	Rabbit
Application	WB
Reactivity	Human,Mouse,Rat
Conjugation	Unconjugated
Modification	Unmodified
Isotype	IgG
Clonality	Monoclonal
Form	Liquid
Concentration	
Storage	Aliquot and store at -20°C (valid for 12 months). Avoid freeze/thaw cycles.
Shipping	Ice bags
Buffer	Purified antibody in PBS with 0.05% sodium azide,0.05% protective protein and 50% glycerol.
Purification	Affinity Purification

Application

Dilution Ratio	WB 1:1000-1:2000
Molecular Weight	Calculated MW: 46 kDa ; Observed MW: 43 kDa

Antigen Information

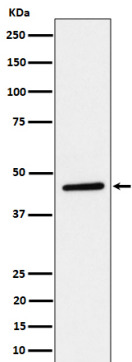
Gene Name	TAPP1
Alternative Names	PLEKHA1; TAPP1;;PLEKHA1
Gene ID	
SwissProt ID	Q9HB21
Immunogen	A synthesized peptide derived from human PLEKHA1

Background

Binds specifically to phosphatidylinositol 3,4-diphosphate (PtdIns3,4P2), but not to other phosphoinositides. May recruit other proteins to the plasma membrane.

Research Area

Image Data



Western blot analysis of TAPP1 expression in HeLa cell lysate.