

Product Name: ITPK1 Rabbit Monoclonal Antibody**Catalog #: AMRe84807**

For research use only.

Summary

Description	Recombinant rabbit monoclonal antibody
Host	Rabbit
Application	WB,IHC
Reactivity	Human
Conjugation	Unconjugated
Modification	Unmodified
Isotype	IgG
Clonality	Monoclonal
Form	Liquid
Concentration	
Storage	Aliquot and store at -20°C (valid for 12 months). Avoid freeze/thaw cycles.
Shipping	Ice bags
Buffer	Purified antibody in PBS with 0.05% sodium azide, 0.05% protective protein and 50% glycerol.
Purification	Affinity Purification

Application

Dilution Ratio	WB 1:1000-1:2000, IHC 1:100-1:200
Molecular Weight	Calculated MW: 46 kDa ; Observed MW: 42 kDa

Antigen Information

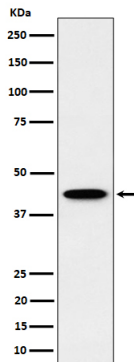
Gene Name	ITPK1
Alternative Names	Inositol 1; itpk1; ITRPK1;;ITPK1
Gene ID	
SwissProt ID	Q13572
Immunogen	A synthesized peptide derived from human ITPK1

Background

Kinase that can phosphorylate various inositol polyphosphate such as Ins(3,4,5,6)P4 or Ins(1,3,4)P3. Phosphorylates Ins(3,4,5,6)P4 at position 1 to form Ins(1,3,4,5,6)P5.

Research Area

Image Data



Western blot analysis of ITPK1 expression in HepG2 cell lysate.

All lanes use the Antibody at 1:1k dilution for 1 hour at room temperature.

