
Product Name: MRPS31 Rabbit Monoclonal Antibody**Catalog #: AMRe84800**

For research use only.

Summary

Description	Recombinant rabbit monoclonal antibody
Host	Rabbit
Application	WB
Reactivity	Human,Mouse,Rat
Conjugation	Unconjugated
Modification	Unmodified
Isotype	IgG
Clonality	Monoclonal
Form	Liquid
Concentration	0.62mg/ml. The concentration of this product may be batch-dependent.
Storage	Aliquot and store at -20°C (valid for 12 months). Avoid freeze/thaw cycles.
Shipping	Ice bags
Buffer	Purified antibody in PBS with 0.05% sodium azide,0.05% protective protein and 50% glycerol.
Purification	Affinity Purification

Application

Dilution Ratio	WB 1:1000-1:2000
Molecular Weight	Calculated MW: 45 kDa ; Observed MW: 37 kDa

Antigen Information

Gene Name	MRPS31
Alternative Names	IMOGN38; MRPS31; S31mt;;MRPS31
Gene ID	
SwissProt ID	Q92665
Immunogen	A synthesized peptide derived from human MRPS31

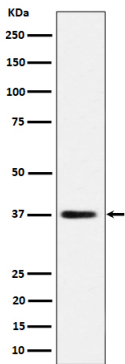
Background

Mammalian mitochondrial ribosomal proteins are encoded by nuclear genes and help in protein synthesis within the mitochondrion. Mitochondrial ribosomes (mitoribosomes) consist of a small 28S subunit and a large 39S subunit. They have an

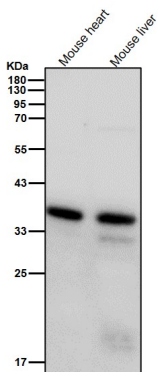
estimated 75% protein to rRNA composition compared to prokaryotic ribosomes, where this ratio is reversed.

Research Area

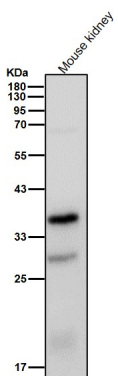
Image Data



Western blot analysis of MRPS31 expression in HepG2 cell lysate.



All lanes use the Antibody at 1:1K dilution for 1 hour at room temperature.



All lanes use the Antibody at 1:1K dilution for 1 hour at room temperature.