
Product Name: CYFIP1 Rabbit Monoclonal Antibody**Catalog #: AMRe84790**

For research use only.

Summary

Description	Recombinant rabbit monoclonal antibody
Host	Rabbit
Application	WB,ICC,FC
Reactivity	Human,Mouse,Rat
Conjugation	Unconjugated
Modification	Unmodified
Isotype	IgG
Clonality	Monoclonal
Form	Liquid
Concentration	0.62mg/ml. The concentration of this product may be batch-dependent.
Storage	Aliquot and store at -20°C (valid for 12 months). Avoid freeze/thaw cycles.
Shipping	Ice bags
Buffer	Purified antibody in PBS with 0.05% sodium azide,0.05% protective protein and 50% glycerol.
Purification	Affinity Purification

Application

Dilution Ratio	WB 1:1000-1:2000,ICC 1:50-1:200,FC 1:20-1:100
Molecular Weight	Calculated MW: 145 kDa ; Observed MW: 130 kDa

Antigen Information

Gene Name	CYFIP1
Alternative Names	CYFIP1; P140SRA1; SHYC; SRA1;;CYFIP1
Gene ID	
SwissProt ID	Q7L576
Immunogen	A synthesized peptide derived from human CYFIP1

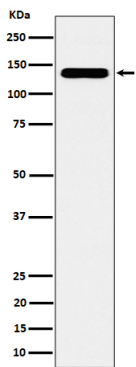
Background

Component of the CYFIP1-EIF4E-FMR1 complex which binds to the mRNA cap and mediates translational repression. In the CYFIP1-EIF4E-FMR1 complex this subunit is an adapter between EIF4E and FMR1. Promotes the translation repression activity

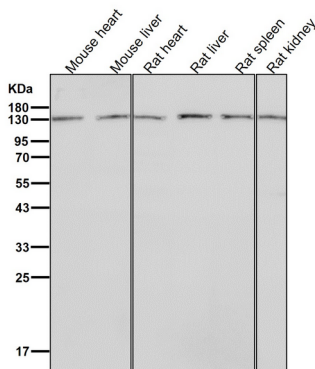
of FMR1 in brain probably by mediating its association with EIF4E and mRNA (By similarity).

Research Area

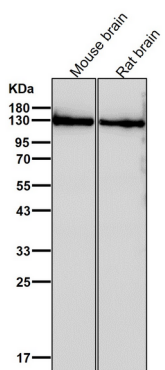
Image Data



Western blot analysis of CYFIP1 expression in HeLa cell lysate.



All lanes use the Antibody at 1:1K dilution for 1 hour at room temperature.



All lanes use the Antibody at 1:1K dilution for 1 hour at room temperature.