
Product Name: EPHX2 Rabbit Monoclonal Antibody**Catalog #: AMRe84786**

For research use only.

Summary

| | |
|----------------------|--|
| Description | Recombinant rabbit monoclonal antibody |
| Host | Rabbit |
| Application | WB |
| Reactivity | Human |
| Conjugation | Unconjugated |
| Modification | Unmodified |
| Isotype | IgG |
| Clonality | Monoclonal |
| Form | Liquid |
| Concentration | |
| Storage | Aliquot and store at -20°C (valid for 12 months). Avoid freeze/thaw cycles. |
| Shipping | Ice bags |
| Buffer | Purified antibody in PBS with 0.05% sodium azide, 0.05% protective protein and 50% glycerol. |
| Purification | Affinity Purification |

Application

| | |
|-------------------------|---|
| Dilution Ratio | WB 1:1000-1:2000 |
| Molecular Weight | Calculated MW: 63 kDa ; Observed MW: 70 kDa |

Antigen Information

| | |
|--------------------------|--|
| Gene Name | EPHX2 |
| Alternative Names | CEH; EPHX2; Epoxide hydrolase 2; SHE;;CEH |
| Gene ID | |
| SwissProt ID | P34913 |
| Immunogen | A synthesized peptide derived from human CEH |

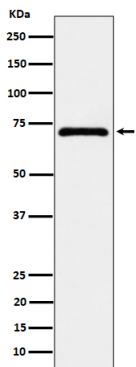
Background

Bifunctional enzyme. The C-terminal domain has epoxide hydrolase activity and acts on epoxides (alkene oxides, oxiranes) and arene oxides. Plays a role in xenobiotic metabolism by degrading potentially toxic epoxides. Also determines steady-state levels

of physiological mediators.

Research Area

Image Data



Western blot analysis of EPHX2 expression in MCF7 cell lysate.