

---

**Product Name: Importin9/RANBP9 Rabbit Monoclonal Antibody****Catalog #: AMRe84767**

For research use only.

**Summary**

|                      |   |
|----------------------|---|
| <b>Description</b>   | Recombinant rabbit monoclonal antibody  |
| <b>Host</b>          | Rabbit  |
| <b>Application</b>   | WB,IHC  |
| <b>Reactivity</b>    | Human   |
| <b>Conjugation</b>   | Unconjugated  |
| <b>Modification</b>  | Unmodified  |
| <b>Isotype</b>       | IgG   |
| <b>Clonality</b>     | Monoclonal  |
| <b>Form</b>          | Liquid  |
| <b>Concentration</b> | 0.62mg/ml. The concentration of this product may be batch-dependent.                        |
| <b>Storage</b>       | Aliquot and store at -20°C (valid for 12 months). Avoid freeze/thaw cycles.                 |
| <b>Shipping</b>      | Ice bags  |
| <b>Buffer</b>        | Purified antibody in PBS with 0.05% sodium azide,0.05% protective protein and 50% glycerol. |
| <b>Purification</b>  | Affinity Purification   |

**Application**

|                         |   |
|-------------------------|---|
| <b>Dilution Ratio</b>   | WB 1:1000-1:2000,IHC 1:100-1:200              |
| <b>Molecular Weight</b> | Calculated MW: 116 kDa ; Observed MW: 140 kDa |

**Antigen Information**

|                          |   |
|--------------------------|---|
| <b>Gene Name</b>         | Importin9/RANBP9                                    |
| <b>Alternative Names</b> | Imp9; Imp9a; Imp9b; Ipo9; RanBP9;;Importin 9        |
| <b>Gene ID</b>           |   |
| <b>SwissProt ID</b>      | Q96P70  |
| <b>Immunogen</b>         | A synthesized peptide derived from human Importin 9 |

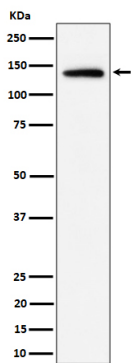
**Background**

Nuclear transport receptor that mediates nuclear import of proteins, such as histones, proteasome and actin.Serves as receptor for nuclear localization signals (NLS) in cargo substrates.Is thought to mediate docking of the importin/substrate complex to

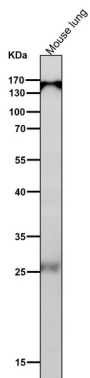
the nuclear pore complex (NPC) through binding to nucleoporin and the complex is subsequently translocated through the pore by an energy requiring, Ran-dependent mechanism.

## Research Area

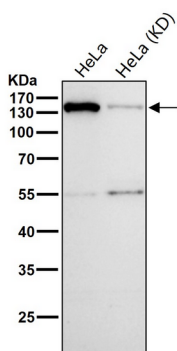
## Image Data



Western blot analysis of Importin 9 / RANBP9 expression in HeLa cell lysate.



All lanes use the Antibody at 1:2K dilution for 1 hour at room temperature.



All lanes use the Antibody at 1:1k dilution for 1 hour at room temperature.