

**Product Name: NAT1 Rabbit Monoclonal Antibody****Catalog #: AMRe84765**

For research use only.

**Summary**

<b>Description</b>	Recombinant rabbit monoclonal antibody
<b>Host</b>	Rabbit
<b>Application</b>	WB,ICC,FC
<b>Reactivity</b>	Human
<b>Conjugation</b>	Unconjugated
<b>Modification</b>	Unmodified
<b>Isotype</b>	IgG
<b>Clonality</b>	Monoclonal
<b>Form</b>	Liquid
<b>Concentration</b>	
<b>Storage</b>	Aliquot and store at -20°C (valid for 12 months). Avoid freeze/thaw cycles.
<b>Shipping</b>	Ice bags
<b>Buffer</b>	Purified antibody in PBS with 0.05% sodium azide, 0.05% protective protein and 50% glycerol.
<b>Purification</b>	Affinity Purification

**Application**

<b>Dilution Ratio</b>	WB 1:1000-1:2000, ICC 1:50-1:200, FC 1:20-1:100
<b>Molecular Weight</b>	Calculated MW: 34 kDa ; Observed MW: 30 kDa

**Antigen Information**

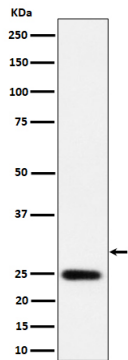
<b>Gene Name</b>	NAT1
<b>Alternative Names</b>	AAC1; Arylamide acetylase 1; mNAT; N acetyltransferase type 1; nat1;;NAT1
<b>Gene ID</b>	
<b>SwissProt ID</b>	P18440
<b>Immunogen</b>	A synthesized peptide derived from human NAT1

**Background**

Participates in the detoxification of a plethora of hydrazine and arylamine drugs. Catalyzes the N- or O-acetylation of various arylamine and heterocyclic amine substrates and is able to bioactivate several known carcinogens.

## Research Area

## Image Data



Western blot analysis of NAT1 expression in LnCaP cell lysate.