
Product Name: TRAPPC2 Rabbit Monoclonal Antibody**Catalog #: AMRe84758**

For research use only.

Summary

Description	Recombinant rabbit monoclonal antibody
Host	Rabbit
Application	WB,IHC,ICC/IF,ICC
Reactivity	Human,Mouse,Rat
Conjugation	Unconjugated
Modification	Unmodified
Isotype	IgG
Clonality	Monoclonal
Form	Liquid
Concentration	
Storage	Aliquot and store at -20°C (valid for 12 months). Avoid freeze/thaw cycles.
Shipping	Ice bags
Buffer	Purified antibody in PBS with 0.05% sodium azide,0.05% protective protein and 50% glycerol.
Purification	Affinity Purification

Application

Dilution Ratio	WB 1:1000-1:2000,IHC 1:100-1:200,ICC/IF 1:50-1:200,ICC 1:50-1:200
Molecular Weight	16 kDa

Antigen Information

Gene Name	TRAPPC2
Alternative Names	MIP2A; SEDL; Sedlin; SEDLP; SEDT; Trafficking protein particle complex 2; TRAPPC2P1; TRS20; ZNF547L;;TRAPPC2
Gene ID	
SwissProt ID	P0DI81
Immunogen	A synthesized peptide derived from human TRAPPC2

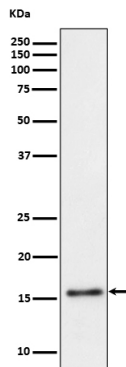
Background

Prevents transcriptional repression and induction of cell death by ENO1. May play a role in vesicular transport from

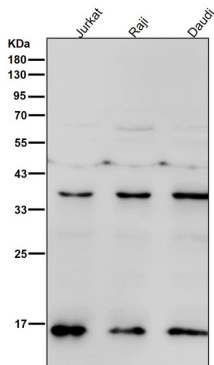
endoplasmic reticulum to Golgi.

Research Area

Image Data



Western blot analysis of TRAPPC2 expression in Raji cell lysate.



All lanes use the Antibody at 1:2K dilution for 1 hour at room temperature.