

**Product Name: Ube2L3/UBCH7 Rabbit Monoclonal Antibody****Catalog #: AMRe84755**

For research use only.

**Summary**

<b>Description</b>	Recombinant rabbit monoclonal antibody
<b>Host</b>	Rabbit
<b>Application</b>	WB,IHC,ICC/IF,ICC
<b>Reactivity</b>	Human,Mouse,Rat
<b>Conjugation</b>	Unconjugated
<b>Modification</b>	Unmodified
<b>Isotype</b>	IgG
<b>Clonality</b>	Monoclonal
<b>Form</b>	Liquid
<b>Concentration</b>	
<b>Storage</b>	Aliquot and store at -20°C (valid for 12 months). Avoid freeze/thaw cycles.
<b>Shipping</b>	Ice bags
<b>Buffer</b>	Purified antibody in PBS with 0.05% sodium azide,0.05% protective protein and 50% glycerol.
<b>Purification</b>	Affinity Purification

**Application**

<b>Dilution Ratio</b>	WB 1:1000-1:2000,IHC 1:100-1:200,ICC/IF 1:50-1:200,ICC 1:50-1:200
<b>Molecular Weight</b>	Calculated MW: 18 kDa ; Observed MW: 17 kDa

**Antigen Information**

<b>Gene Name</b>	Ube2L3/UBCH7
<b>Alternative Names</b>	UBCE7; Ubch7; UbcM4; Ube2l3;;UBE2L3
<b>Gene ID</b>	
<b>SwissProt ID</b>	P68036
<b>Immunogen</b>	A synthesized peptide derived from human UBE2L3

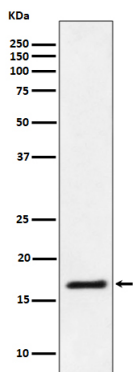
**Background**

Ubiquitin-conjugating enzyme E2 that specifically acts with HECT-type and RBR family E3 ubiquitin-protein ligases. Does not function with most RING-containing E3 ubiquitin-protein ligases because it lacks intrinsic E3-independent reactivity with lysine:

in contrast, it has activity with the RBR family E3 enzymes, such as PRKN, RNF31 and ARIH1, that function like RING-HECT hybrids. Accepts ubiquitin from the E1 complex and catalyzes its covalent attachment to other proteins. In vitro catalyzes 'Lys-11'-linked polyubiquitination.

## Research Area

## Image Data



Western blot analysis of Ube2L3 / UBCH7 expression in Jurkat cell lysate.