
Product Name: SLP2 Rabbit Monoclonal Antibody**Catalog #: AMRe84746**

For research use only.

Summary

Description	Recombinant rabbit monoclonal antibody
Host	Rabbit
Application	WB,ICC,FC,IP
Reactivity	Human,Mouse,Rat
Conjugation	Unconjugated
Modification	Unmodified
Isotype	IgG
Clonality	Monoclonal
Form	Liquid
Concentration	
Storage	Aliquot and store at -20°C (valid for 12 months). Avoid freeze/thaw cycles.
Shipping	Ice bags
Buffer	Purified antibody in PBS with 0.05% sodium azide,0.05% protective protein and 50% glycerol.
Purification	Affinity Purification

Application

Dilution Ratio	WB 1:1000-1:2000,ICC 1:50-1:200,FC 1:20-1:100,IP 1:20-1:50
Molecular Weight	39 kDa

Antigen Information

Gene Name	SLP2
Alternative Names	EPB72 like protein 2; HSPC108; Paraprotein target 7; Paratarg 7; SLP2; Stomatin (EPB72) like 2; Stomatin like 2; Stomatin like protein 2; Stomatin-like protein 2; STOML2;;SLP 2
Gene ID	
SwissProt ID	Q9UJZ1
Immunogen	A synthesized peptide derived from human SLP 2

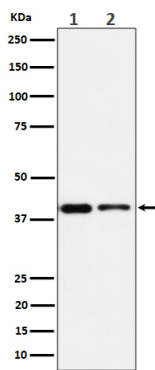
Background

Mitochondrial protein that probably regulates the biogenesis and the activity of mitochondria. Stimulates cardiolipin

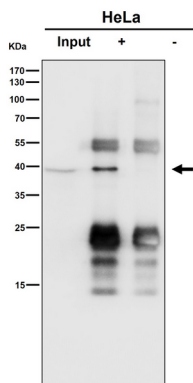
biosynthesis, binds cardiolipin-enriched membranes where it recruits and stabilizes some proteins including prohibitin and may therefore act in the organization of functional microdomains in mitochondrial membranes.

Research Area

Image Data



Western blot analysis of SLP2 expression in (1) Jurkat cell lysate; (2) RAW 264.7 cell lysate.



Immunoprecipitate (IP) analysis using the Antibody at 1:50 dilution. (wb at 1:1K dilution)