

Product Name: ENDOGL1/ENGL Rabbit Monoclonal Antibody**Catalog #: AMRe84744**

For research use only.

Summary

Description	Recombinant rabbit monoclonal antibody
Host	Rabbit
Application	WB,IP
Reactivity	Human
Conjugation	Unconjugated
Modification	Unmodified
Isotype	IgG
Clonality	Monoclonal
Form	Liquid
Concentration	0.62mg/ml. The concentration of this product may be batch-dependent.
Storage	Aliquot and store at -20°C (valid for 12 months). Avoid freeze/thaw cycles.
Shipping	Ice bags
Buffer	Purified antibody in PBS with 0.05% sodium azide, 0.05% protective protein and 50% glycerol.
Purification	Affinity Purification

Application

Dilution Ratio	WB 1:1000-1:2000, IP 1:20-1:50
Molecular Weight	41 kDa

Antigen Information

Gene Name	ENDOGL1/ENGL
Alternative Names	Endo G like 1; ENDOGL1; ENDOGL2; Endonuclease G like 1; Endonuclease G like 2; ENGL; ENGLA; ENGLB; Exog; Nuclease EXOG;; EXOG
Gene ID	
SwissProt ID	Q9Y2C4
Immunogen	A synthesized peptide derived from human EXOG

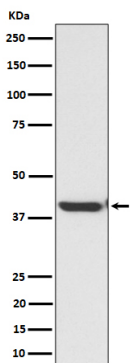
Background

Endo/exonuclease with nicking activity towards supercoiled DNA, a preference for single-stranded DNA and 5'-3' exonuclease

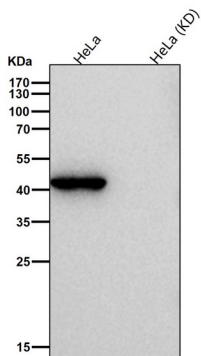
activity.

Research Area

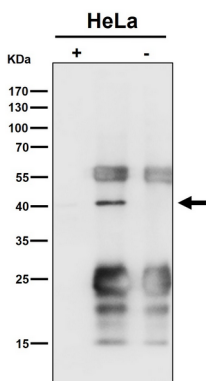
Image Data



Western blot analysis of ENDOGL1 / ENGL expression in HepG2 cell lysate.



All lanes use the Antibody at 1:1K dilution for 1 hour at room temperature.



Immunoprecipitate (IP) analysis using the Antibody at 1:50 dilution. (wb at 1:1K dilution)