

Product Name: SCIN Rabbit Monoclonal Antibody**Catalog #: AMRe84738**

For research use only.

Summary

Description	Recombinant rabbit monoclonal antibody
Host	Rabbit
Application	WB,IHC
Reactivity	Human,Mouse,Rat
Conjugation	Unconjugated
Modification	Unmodified
Isotype	IgG
Clonality	Monoclonal
Form	Liquid
Concentration	0.62mg/ml. The concentration of this product may be batch-dependent.
Storage	Aliquot and store at -20°C (valid for 12 months). Avoid freeze/thaw cycles.
Shipping	Ice bags
Buffer	Purified antibody in PBS with 0.05% sodium azide,0.05% protective protein and 50% glycerol.
Purification	Affinity Purification

Application

Dilution Ratio	WB 1:1000-1:2000,IHC 1:100-1:200
Molecular Weight	80 kDa

Antigen Information

Gene Name	SCIN
Alternative Names	Adseverin; Scin; Scinderin;;Scinderin
Gene ID	
SwissProt ID	Q9Y6U3
Immunogen	A synthesized peptide derived from human Scinderin

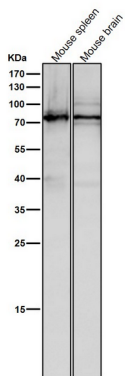
Background

Ca²⁺-dependent actin filament-severing protein that has a regulatory function in exocytosis by affecting the organization of the microfilament network underneath the plasma membrane. Severing activity is inhibited by phosphatidylinositol 4,5-bis-

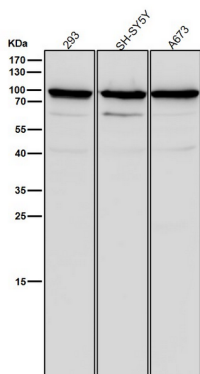
phosphate. In vitro, also has barbed end capping and nucleating activities in the presence of Ca^{2+} . Required for megakaryocyte differentiation, maturation, polyploidization and apoptosis with the release of platelet-like particles.

Research Area

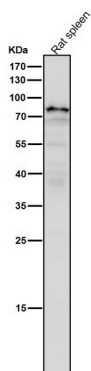
Image Data



All lanes use the Antibody at 1:1K dilution for 1 hour at room temperature.



All lanes use the Antibody at 1:1K dilution for 1 hour at room temperature.



All lanes use the Antibody at 1:1K dilution for 1 hour at room temperature.