
Product Name: Spermine synthase Rabbit Monoclonal Antibody**Catalog #: AMRe84716**

For research use only.

Summary

Description	Recombinant rabbit monoclonal antibody
Host	Rabbit
Application	WB,ICC
Reactivity	Human,Mouse,Rat
Conjugation	Unconjugated
Modification	Unmodified
Isotype	IgG
Clonality	Monoclonal
Form	Liquid
Concentration	0.49mg/ml. The concentration of this product may be batch-dependent.
Storage	Aliquot and store at -20°C (valid for 12 months). Avoid freeze/thaw cycles.
Shipping	Ice bags
Buffer	Purified antibody in PBS with 0.05% sodium azide,0.05% protective protein and 50% glycerol.
Purification	Affinity Purification

Application

Dilution Ratio	WB 1:1000-1:2000,ICC 1:50-1:200
Molecular Weight	41 kDa

Antigen Information

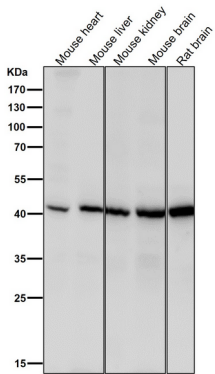
Gene Name	Spermine synthase
Alternative Names	MRSR; SMS; Spermine synthase; SPMSY; SpS; SRS;;SPMSY
Gene ID	
SwissProt ID	P52788
Immunogen	A synthesized peptide derived from human SPMSY

Background

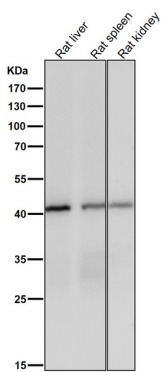
Catalyzes the production of spermine from spermidine and decarboxylated S-adenosylmethionine (dcSAM).

Research Area

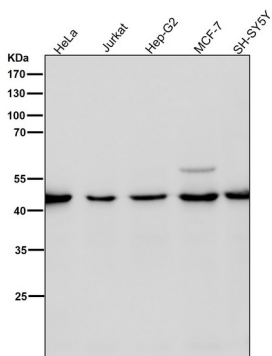
Image Data



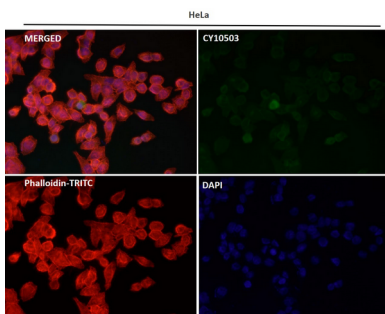
All lanes use the Antibody at 1:1K dilution for 1 hour at room temperature.



All lanes use the Antibody at 1:1K dilution for 1 hour at room temperature.



All lanes use the Antibody at 1:1K dilution for 1 hour at room temperature.



Immunofluorescent analysis using the Antibody at 1:50 dilution.

