
Product Name: PPM1E Rabbit Monoclonal Antibody**Catalog #: AMRe84713**

For research use only.

Summary

Description	Recombinant rabbit monoclonal antibody
Host	Rabbit
Application	WB,FC
Reactivity	Human
Conjugation	Unconjugated
Modification	Unmodified
Isotype	IgG
Clonality	Monoclonal
Form	Liquid
Concentration	
Storage	Aliquot and store at -20°C (valid for 12 months). Avoid freeze/thaw cycles.
Shipping	Ice bags
Buffer	Purified antibody in PBS with 0.05% sodium azide,0.05% protective protein and 50% glycerol.
Purification	Affinity Purification

Application

Dilution Ratio	WB 1:1000-1:2000,FC 1:20-1:100
Molecular Weight	Calculated MW: 84 kDa ; Observed MW: 90 kDa

Antigen Information

Gene Name	PPM1E
Alternative Names	CaMKN; POPX1; PP2CH; Ppm1e;;Protein phosphatase 1E
Gene ID	
SwissProt ID	Q8WY54
Immunogen	A synthesized peptide derived from human Protein phosphatase 1E

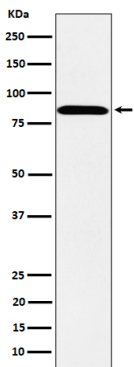
Background

Protein phosphatase that inactivates multifunctional CaM kinases such as CAMK4 and CAMK2. Dephosphorylates and inactivates PAK. May play a role in the inhibition of actin fiber stress breakdown and in morphological changes driven by

TNK2/CDC42. Dephosphorylates PRKAA2.

Research Area

Image Data



Western blot analysis of PPM1E expression in SH-SY5Y cell lysate.