
Product Name: SAMM50 Rabbit Monoclonal Antibody**Catalog #: AMRe84706**

For research use only.

Summary

Description	Recombinant rabbit monoclonal antibody
Host	Rabbit
Application	WB,IHC
Reactivity	Human
Conjugation	Unconjugated
Modification	Unmodified
Isotype	IgG
Clonality	Monoclonal
Form	Liquid
Concentration	
Storage	Aliquot and store at -20°C (valid for 12 months). Avoid freeze/thaw cycles.
Shipping	Ice bags
Buffer	Purified antibody in PBS with 0.05% sodium azide,0.05% protective protein and 50% glycerol.
Purification	Affinity Purification

Application

Dilution Ratio	WB 1:1000-1:2000,IHC 1:100-1:200
Molecular Weight	52 kDa

Antigen Information

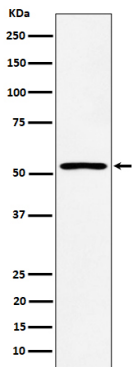
Gene Name	SAMM50
Alternative Names	CGI 51; OMP85; SAM50; Samm50; TOB55;;SAMM50
Gene ID	
SwissProt ID	Q9Y512
Immunogen	A synthesized peptide derived from human SAMM50

Background

Plays a crucial role in the maintenance of the structure of mitochondrial cristae and the proper assembly of the mitochondrial respiratory chain complexes. Required for the assembly of TOMM40 into the TOM complex.

Research Area

Image Data



Western blot analysis of SAMM50 expression in HepG2 cell lysate.