

---

**Product Name: ORP1 Rabbit Monoclonal Antibody****Catalog #: AMRe84696**

For research use only.

**Summary**

|                      |   |
|----------------------|---|
| <b>Description</b>   | Recombinant rabbit monoclonal antibody  |
| <b>Host</b>          | Rabbit  |
| <b>Application</b>   | WB,ICC,FC   |
| <b>Reactivity</b>    | Human,Mouse,Rat   |
| <b>Conjugation</b>   | Unconjugated  |
| <b>Modification</b>  | Unmodified  |
| <b>Isotype</b>       | IgG   |
| <b>Clonality</b>     | Monoclonal  |
| <b>Form</b>          | Liquid  |
| <b>Concentration</b> |   |
| <b>Storage</b>       | Aliquot and store at -20°C (valid for 12 months). Avoid freeze/thaw cycles.                 |
| <b>Shipping</b>      | Ice bags  |
| <b>Buffer</b>        | Purified antibody in PBS with 0.05% sodium azide,0.05% protective protein and 50% glycerol. |
| <b>Purification</b>  | Affinity Purification   |

**Application**

|                         |  |
|-------------------------|--|
| <b>Dilution Ratio</b>   | WB 1:1000-1:2000,ICC 1:50-1:200,FC 1:20-1:100    |
| <b>Molecular Weight</b> | Calculated MW: 108 kDa ; Observed MW: 50,108 kDa |

**Antigen Information**

|                          |   |
|--------------------------|---|
| <b>Gene Name</b>         | ORP1  |
| <b>Alternative Names</b> | ORP1; OSBP8; OSBPL1; OSBPL1A; OSBPL1B;;ORP1   |
| <b>Gene ID</b>           |   |
| <b>SwissProt ID</b>      | Q9BXW6  |
| <b>Immunogen</b>         | A synthesized peptide derived from human ORP1 |

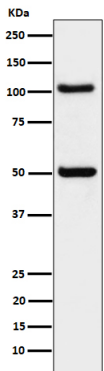
**Background**

Binds phospholipids; exhibits strong binding to phosphatidic acid and weak binding to phosphatidylinositol 3-phosphate. Stabilizes GTP-bound RAB7A on late endosomes/lysosomes and alters functional properties of late endocytic

compartments via its interaction with RAB7A.

## Research Area

## Image Data



Western blot analysis of ORP1 expression in 293 cell lysate.

All lanes use the Antibody at 1:1K dilution for 1 hour at room temperature.

