

Product Name: ARPC2 Rabbit Monoclonal Antibody**Catalog #: AMRe84684**

For research use only.

Summary

Description	Recombinant rabbit monoclonal antibody
Host	Rabbit
Application	WB,IHC,ICC/IF,ICC,FC,IP
Reactivity	Human,Mouse,Rat
Conjugation	Unconjugated
Modification	Unmodified
Isotype	IgG
Clonality	Monoclonal
Form	Liquid
Concentration	0.62mg/ml. The concentration of this product may be batch-dependent.
Storage	Aliquot and store at -20°C (valid for 12 months). Avoid freeze/thaw cycles.
Shipping	Ice bags
Buffer	Purified antibody in PBS with 0.05% sodium azide,0.05% protective protein and 50% glycerol.
Purification	Affinity Purification

Application

Dilution Ratio	WB 1:1000-1:2000,IHC 1:100-1:200,ICC/IF 1:50-1:200,ICC 1:50-1:200,FC 1:20-1:100,IP 1:20-1:50
Molecular Weight	34 kDa

Antigen Information

Gene Name	ARPC2
Alternative Names	ARC34; Arpc2; p34Arc; PNAS139; PRO2446;;ARPC2
Gene ID	
SwissProt ID	O15144
Immunogen	A synthesized peptide derived from human ARPC2

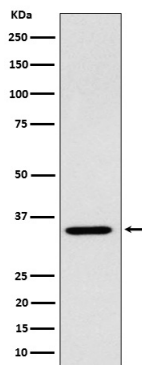
Background

Actin-binding component of the Arp2/3 complex, a multiprotein complex that mediates actin polymerization upon stimulation

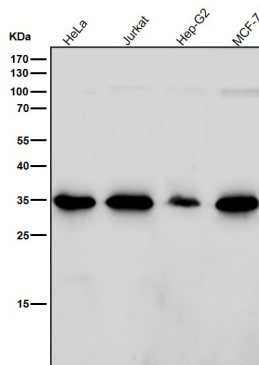
by nucleation-promoting factor (NPF). The Arp2/3 complex mediates the formation of branched actin networks in the cytoplasm, providing the force for cell motility.

Research Area

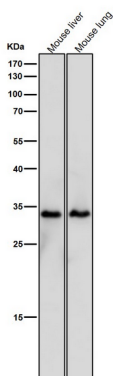
Image Data



Western blot analysis of ARPC2 expression in 293 cell lysate.



All lanes use the Antibody at 1:2K dilution for 1 hour at room temperature.



All lanes use the Antibody at 1:2K dilution for 1 hour at room temperature.