

---

**Product Name: LTB4R Rabbit Monoclonal Antibody****Catalog #: AMRe84683**

For research use only.

**Summary**

<b>Description</b>	Recombinant rabbit monoclonal antibody
<b>Host</b>	Rabbit
<b>Application</b>	WB,IHC
<b>Reactivity</b>	Human
<b>Conjugation</b>	Unconjugated
<b>Modification</b>	Unmodified
<b>Isotype</b>	IgG
<b>Clonality</b>	Monoclonal
<b>Form</b>	Liquid
<b>Concentration</b>	
<b>Storage</b>	Aliquot and store at -20°C (valid for 12 months). Avoid freeze/thaw cycles.
<b>Shipping</b>	Ice bags
<b>Buffer</b>	Purified antibody in PBS with 0.05% sodium azide,0.05% protective protein and 50% glycerol.
<b>Purification</b>	Affinity Purification

**Application**

<b>Dilution Ratio</b>	WB 1:1000-1:2000,IHC 1:100-1:200
<b>Molecular Weight</b>	38 kDa

**Antigen Information**

<b>Gene Name</b>	LTB4R
<b>Alternative Names</b>	BLT; BLT1; BLTR; CMKRL1; GPR16; LTB4R1; LTBR1; P2RY7; P2Y7;;LTB4 R1
<b>Gene ID</b>	
<b>SwissProt ID</b>	Q15722
<b>Immunogen</b>	A synthesized peptide derived from human LTB4 R1

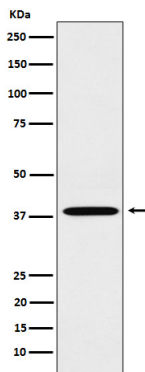
**Background**

Receptor for extracellular ATP > UTP and ADP. The activity of this receptor is mediated by G proteins which activate a phosphatidylinositol-calcium second messenger system. May be the cardiac P2Y receptor involved in the regulation of cardiac

muscle contraction through modulation of L-type calcium currents. Is a receptor for leukotriene B4, a potent chemoattractant involved in inflammation and immune response.

## Research Area

## Image Data



Western blot analysis of LTB4R expression in A549 cell lysate.