

Product Name: GLU2B Rabbit Monoclonal Antibody**Catalog #: AMRe84677**

For research use only.

Summary

Description	Recombinant rabbit monoclonal antibody
Host	Rabbit
Application	WB,IHC,ICC/IF,ICC
Reactivity	Human
Conjugation	Unconjugated
Modification	Unmodified
Isotype	IgG
Clonality	Monoclonal
Form	Liquid
Concentration	
Storage	Aliquot and store at -20°C (valid for 12 months). Avoid freeze/thaw cycles.
Shipping	Ice bags
Buffer	Purified antibody in PBS with 0.05% sodium azide,0.05% protective protein and 50% glycerol.
Purification	Affinity Purification

Application

Dilution Ratio	WB 1:1000-1:2000,IHC 1:100-1:200,ICC/IF 1:50-1:200,ICC 1:50-1:200
Molecular Weight	Calculated MW: 59 kDa ; Observed MW: 80 kDa

Antigen Information

Gene Name	GLU2B
Alternative Names	G19P1; PCLD; PKCSH; PLD1; PRKCSH;;Glucosidase 2 beta
Gene ID	
SwissProt ID	P14314
Immunogen	A synthesized peptide derived from human Glucosidase 2 beta

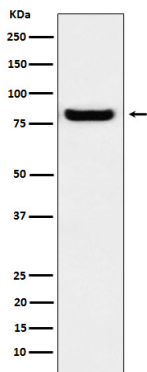
Background

Regulatory subunit of glucosidase II that cleaves sequentially the 2 innermost alpha-1,3-linked glucose residues from the Glc2Man9GlcNAc2 oligosaccharide precursor of immature glycoproteins. Required for efficient PKD1/Polycystin-1 biogenesis

and trafficking to the plasma membrane of the primary cilia.

Research Area

Image Data



Western blot analysis of GLU2B expression in A431 cell lysate.