

Product Name: RGMA Rabbit Monoclonal Antibody**Catalog #: AMRe84676**

For research use only.

Summary

Description	Recombinant rabbit monoclonal antibody
Host	Rabbit
Application	WB,ICC
Reactivity	Human,Mouse,Rat
Conjugation	Unconjugated
Modification	Unmodified
Isotype	IgG
Clonality	Monoclonal
Form	Liquid
Concentration	
Storage	Aliquot and store at -20°C (valid for 12 months). Avoid freeze/thaw cycles.
Shipping	Ice bags
Buffer	Purified antibody in PBS with 0.05% sodium azide,0.05% protective protein and 50% glycerol.
Purification	Affinity Purification

Application

Dilution Ratio	WB 1:1000-1:2000,ICC 1:50-1:200
Molecular Weight	Calculated MW: 49 kDa ; Observed MW: 37 kDa

Antigen Information

Gene Name	RGMA
Alternative Names	Repulsive guidance molecule A; RGM; RGM domain family member A; RGMA;;Repulsive guidance molecule A
Gene ID	
SwissProt ID	Q96B86
Immunogen	A synthesized peptide derived from human Repulsive guidance molecule A

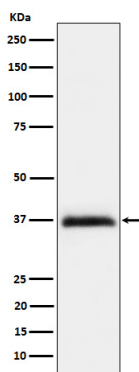
Background

Member of the repulsive guidance molecule (RGM) family that performs several functions in the developing and adult nervous

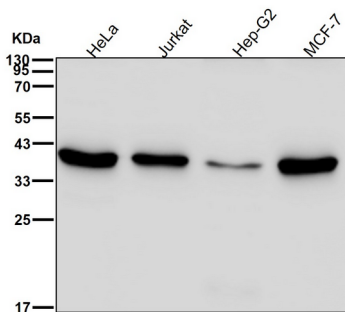
system. Regulates cephalic neural tube closure, inhibits neurite outgrowth and cortical neuron branching, and the formation of mature synapses. Binding to its receptor NEO1/neogenin induces activation of RHOA-ROCK1/Rho-kinase signaling pathway through UNC5B-ARHGEF12/LARG-PTK2/FAK1 cascade, leading to collapse of the neuronal growth cone and neurite outgrowth inhibition.

Research Area

Image Data



Western blot analysis of RGMA expression in HeLa cell lysate.



All lanes use the Antibody at 1:2K dilution for 1 hour at room temperature.