

Product Name: CTR1/SLC31A1 Rabbit Monoclonal Antibody**Catalog #: AMRe84671**

For research use only.

Summary

Description	Recombinant rabbit monoclonal antibody
Host	Rabbit
Application	WB
Reactivity	Human, Mouse, Rat
Conjugation	Unconjugated
Modification	Unmodified
Isotype	IgG
Clonality	Monoclonal
Form	Liquid
Concentration	0.62mg/ml. The concentration of this product may be batch-dependent.
Storage	Aliquot and store at -20°C (valid for 12 months). Avoid freeze/thaw cycles.
Shipping	Ice bags
Buffer	Purified antibody in PBS with 0.05% sodium azide, 0.05% protective protein and 50% glycerol.
Purification	Affinity Purification

Application

Dilution Ratio	WB 1:1000-1:2000
Molecular Weight	Calculated MW: 21 kDa ; Observed MW: 26-34 kDa

Antigen Information

Gene Name	CTR1/SLC31A1
Alternative Names	COPT1; CTR1; hCTR1; SLC31A1;;SLC31A1
Gene ID	
SwissProt ID	O15431
Immunogen	A synthesized peptide derived from human SLC31A1

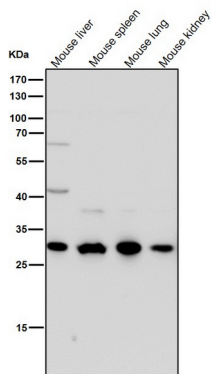
Background

Uniporter that mediates the transport of copper¹⁺ from the extracellular space to the cytoplasm, across the plasma membrane and delivers directly copper¹⁺ to specific chaperone such as ATOX1, via a copper¹⁺-mediated transient interaction between

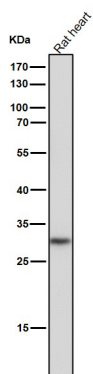
the C-terminal domain and a copper1+ chaperone, thus controlling intracellular copper1+ levels.

Research Area

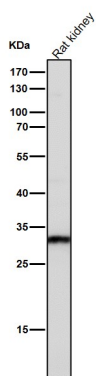
Image Data



All lanes use the Antibody at 1:2K dilution for 1 hour at room temperature.



All lanes use the Antibody at 1:2K dilution for 1 hour at room temperature.



All lanes use the Antibody at 1:2K dilution for 1 hour at room temperature.