
Product Name: GTF2F2 Rabbit Monoclonal Antibody**Catalog #: AMRe84650**

For research use only.

Summary

Description	Recombinant rabbit monoclonal antibody
Host	Rabbit
Application	WB,IHC,ICC/IF,ICC,IP
Reactivity	Human,Mouse,Rat
Conjugation	Unconjugated
Modification	Unmodified
Isotype	IgG
Clonality	Monoclonal
Form	Liquid
Concentration	0.71mg/ml. The concentration of this product may be batch-dependent.
Storage	Aliquot and store at -20°C (valid for 12 months). Avoid freeze/thaw cycles.
Shipping	Ice bags
Buffer	Purified antibody in PBS with 0.05% sodium azide,0.05% protective protein and 50% glycerol.
Purification	Affinity Purification

Application

Dilution Ratio	WB 1:1000-1:2000,IHC 1:100-1:200,ICC/IF 1:50-1:200,ICC 1:50-1:200,IP 1:20-1:50
Molecular Weight	Calculated MW: 28 kDa ; Observed MW: 30 kDa

Antigen Information

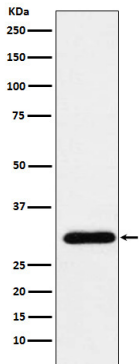
Gene Name	GTF2F2
Alternative Names	BTF4; Gtf2f2; RAP30; TF2F2; TFIIF; TFIIF beta;;GTF2F2
Gene ID	
SwissProt ID	P13984
Immunogen	A synthesized peptide derived from human GTF2F2

Background

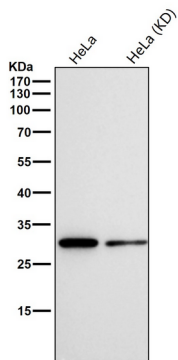
TFIIF is a general transcription initiation factor that binds to RNA polymerase II and helps to recruit it to the initiation complex in collaboration with TFIIB.

Research Area

Image Data



Western blot analysis of GTF2F2 expression in HeLa cell lysate.



All lanes use the Antibody at 1:1k dilution for 1 hour at room temperature.