

Product Name: XPD Rabbit Monoclonal Antibody**Catalog #: AMRe84623**

For research use only.

Summary

Description	Recombinant rabbit monoclonal antibody
Host	Rabbit
Application	WB,IHC,ICC/IF,ICC
Reactivity	Human
Conjugation	Unconjugated
Modification	Unmodified
Isotype	IgG
Clonality	Monoclonal
Form	Liquid
Concentration	
Storage	Aliquot and store at -20°C (valid for 12 months). Avoid freeze/thaw cycles.
Shipping	Ice bags
Buffer	Purified antibody in PBS with 0.05% sodium azide,0.05% protective protein and 50% glycerol.
Purification	Affinity Purification

Application

Dilution Ratio	WB 1:1000-1:2000,IHC 1:100-1:200,ICC/IF 1:50-1:200,ICC 1:50-1:200
Molecular Weight	Calculated MW: 87 kDa ; Observed MW: 75 kDa

Antigen Information

Gene Name	XPD
Alternative Names	BTF2 p80; COFS2; CXPB; EM9; ERCC2; MAG; TFIIH p80; TTD; XPD; XPB;XPD
Gene ID	
SwissProt ID	P18074
Immunogen	A synthesized peptide derived from human XPD

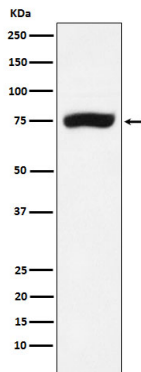
Background

ATP-dependent 5'-3' DNA helicase, component of the general transcription and DNA repair factor IIH (TFIIH) core complex, which is involved in general and transcription-coupled nucleotide excision repair (NER) of damaged DNA and, when complexed

to CAK, in RNA transcription by RNA polymerase II.

Research Area

Image Data



Western blot analysis of XPD expression in A431 cell lysate.