

---

**Product Name: Kallikrein 5 Rabbit Monoclonal Antibody****Catalog #: AMRe84621**

For research use only.

**Summary**

<b>Description</b>	Recombinant rabbit monoclonal antibody
<b>Host</b>	Rabbit
<b>Application</b>	WB,ICC,FC
<b>Reactivity</b>	Human,Mouse
<b>Conjugation</b>	Unconjugated
<b>Modification</b>	Unmodified
<b>Isotype</b>	IgG
<b>Clonality</b>	Monoclonal
<b>Form</b>	Liquid
<b>Concentration</b>	
<b>Storage</b>	Aliquot and store at -20°C (valid for 12 months). Avoid freeze/thaw cycles.
<b>Shipping</b>	Ice bags
<b>Buffer</b>	Purified antibody in PBS with 0.05% sodium azide,0.05% protective protein and 50% glycerol.
<b>Purification</b>	Affinity Purification

**Application**

<b>Dilution Ratio</b>	WB 1:1000-1:2000,ICC 1:50-1:200,FC 1:20-1:100
<b>Molecular Weight</b>	Calculated MW: 32 kDa ; Observed MW: 37 kDa

**Antigen Information**

<b>Gene Name</b>	Kallikrein 5
<b>Alternative Names</b>	HK5; Kallikrein 5; Kallikrein L2; KLK 5; KLK L2; SCTE;;Kallikrein 5
<b>Gene ID</b>	
<b>SwissProt ID</b>	Q9Y337
<b>Immunogen</b>	A synthesized peptide derived from human Kallikrein 5

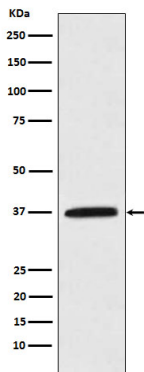
**Background**

Kallikreins are a subgroup of serine proteases having diverse physiological functions. Growing evidence suggests that many kallikreins are implicated in carcinogenesis and some have potential as novel cancer and other disease biomarkers. This gene is

one of the fifteen kallikrein subfamily members located in a cluster on chromosome 19. Its expression is up-regulated by estrogens and progestins.

## Research Area

## Image Data



Western blot analysis of Kallikrein 5 expression in MCF-7 cell lysate.