
Product Name: BAT3 Rabbit Monoclonal Antibody**Catalog #: AMRe84620**

For research use only.

Summary

Description	Recombinant rabbit monoclonal antibody
Host	Rabbit
Application	WB,IHC,ICC/IF,ICC,FC
Reactivity	Human,Mouse,Rat
Conjugation	Unconjugated
Modification	Unmodified
Isotype	IgG
Clonality	Monoclonal
Form	Liquid
Concentration	0.71mg/ml. The concentration of this product may be batch-dependent.
Storage	Aliquot and store at -20°C (valid for 12 months). Avoid freeze/thaw cycles.
Shipping	Ice bags
Buffer	Purified antibody in PBS with 0.05% sodium azide,0.05% protective protein and 50% glycerol.
Purification	Affinity Purification

Application

Dilution Ratio	WB 1:1000-1:2000,IHC 1:100-1:200,ICC/IF 1:50-1:200,ICC 1:50-1:200,FC 1:20-1:100
Molecular Weight	Calculated MW: 119 kDa ; Observed MW: 160 kDa

Antigen Information

Gene Name	BAT3
Alternative Names	BAG6; BAT 3; Scythe;;BAG6
Gene ID	
SwissProt ID	P46379
Immunogen	A synthesized peptide derived from human BAG6

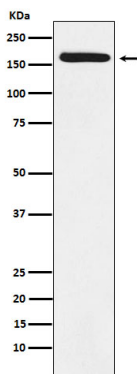
Background

Chaperone that plays a key role in various processes such as apoptosis, insertion of tail-anchored (TA) membrane proteins to the endoplasmic reticulum membrane and regulation of chromatin. Acts in part by regulating stability of proteins and their

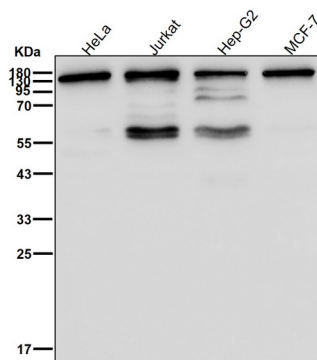
degradation by the proteasome. Participates in endoplasmic reticulum stress-induced apoptosis via its interaction with AIFM1/AIF by regulating AIFM1/AIF stability and preventing its degradation.

Research Area

Image Data



Western blot analysis of BAT3 expression in A431 cell lysate.



All lanes use the Antibody at 1:2K dilution for 1 hour at room temperature.