

**Product Name: Lgi1 Rabbit Monoclonal Antibody****Catalog #: AMRe84618**

For research use only.

**Summary**

<b>Description</b>	Recombinant rabbit monoclonal antibody
<b>Host</b>	Rabbit
<b>Application</b>	WB,IHC,IP
<b>Reactivity</b>	Human,Mouse,Rat
<b>Conjugation</b>	Unconjugated
<b>Modification</b>	Unmodified
<b>Isotype</b>	IgG
<b>Clonality</b>	Monoclonal
<b>Form</b>	Liquid
<b>Concentration</b>	0.62mg/ml. The concentration of this product may be batch-dependent.
<b>Storage</b>	Aliquot and store at -20°C (valid for 12 months). Avoid freeze/thaw cycles.
<b>Shipping</b>	Ice bags
<b>Buffer</b>	Purified antibody in PBS with 0.05% sodium azide,0.05% protective protein and 50% glycerol.
<b>Purification</b>	Affinity Purification

**Application**

<b>Dilution Ratio</b>	WB 1:1000-1:2000,IHC 1:100-1:200,IP 1:20-1:50
<b>Molecular Weight</b>	64 kDa

**Antigen Information**

<b>Gene Name</b>	Lgi1
<b>Alternative Names</b>	ADLTE; ADPAEF; ADPEAF; Epitempin 1; EPITEMPIN; EPT; ETL1; LGI1;;Epitempin 1
<b>Gene ID</b>	
<b>SwissProt ID</b>	O95970
<b>Immunogen</b>	A synthesized peptide derived from human Epitempin 1

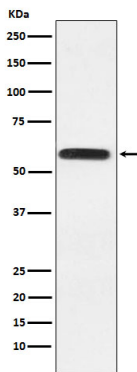
**Background**

Regulates voltage-gated potassium channels assembled from KCNA1, KCNA4 and KCNAB1. It slows down channel inactivation by precluding channel closure mediated by the KCNAB1 subunit. Ligand for ADAM22 that positively regulates synaptic

transmission mediated by AMPA-type glutamate receptors (By similarity).

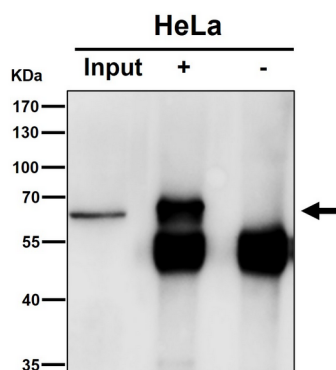
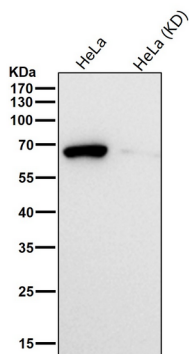
## Research Area

## Image Data



Western blot analysis of Lgi1 expression in HeLa cell lysate.

All lanes use the Antibody at 1:1k dilution for 1 hour at room temperature.



Immunoprecipitate (IP) analysis using the Antibody at 1:50 dilution. (wb at 1:3K dilution)