

Product Name: ECM1 Rabbit Monoclonal Antibody**Catalog #: AMRe84602**

For research use only.

Summary

| | |
|----------------------|---|
| Description | Recombinant rabbit monoclonal antibody |
| Host | Rabbit |
| Application | WB,IHC,ICC/IF,ICC,FC,IP |
| Reactivity | Human,Rat |
| Conjugation | Unconjugated |
| Modification | Unmodified |
| Isotype | IgG |
| Clonality | Monoclonal |
| Form | Liquid |
| Concentration | 0.71mg/ml. The concentration of this product may be batch-dependent. |
| Storage | Aliquot and store at -20°C (valid for 12 months). Avoid freeze/thaw cycles. |
| Shipping | Ice bags |
| Buffer | Purified antibody in PBS with 0.05% sodium azide,0.05% protective protein and 50% glycerol. |
| Purification | Affinity Purification |

Application

| | |
|-------------------------|--|
| Dilution Ratio | WB 1:1000-1:2000,IHC 1:100-1:200,ICC/IF 1:50-1:200,ICC 1:50-1:200,FC 1:20-1:100,IP 1:20-1:50 |
| Molecular Weight | Calculated MW: 61 kDa ; Observed MW: 70 kDa |

Antigen Information

| | |
|--------------------------|---|
| Gene Name | ECM1 |
| Alternative Names | Ecm1; URBWD;;Extracellular matrix protein 1 |
| Gene ID | |
| SwissProt ID | Q16610 |
| Immunogen | A synthesized peptide derived from human Extracellular matrix protein 1 |

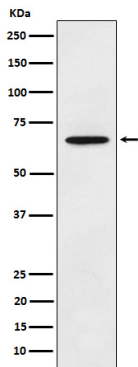
Background

Involved in endochondral bone formation as negative regulator of bone mineralization. Stimulates the proliferation of

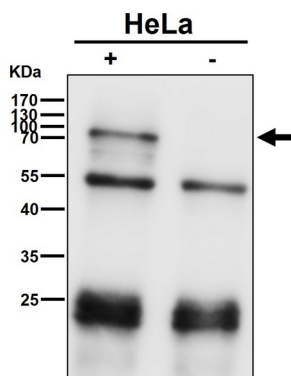
endothelial cells and promotes angiogenesis. Inhibits MMP9 proteolytic activity.

Research Area

Image Data



Western blot analysis of ECM1 expression in A375 cell lysate.



Immunoprecipitate (IP) analysis using the Antibody at 1:50 dilution. (wb at 1:3K dilution)