

---

**Product Name: CaMKII Rabbit Monoclonal Antibody****Catalog #: AMRe84600**

For research use only.

**Summary**

<b>Description</b>	Recombinant rabbit monoclonal antibody
<b>Host</b>	Rabbit
<b>Application</b>	WB,FC
<b>Reactivity</b>	Human,Mouse,Rat
<b>Conjugation</b>	Unconjugated
<b>Modification</b>	Unmodified
<b>Isotype</b>	IgG
<b>Clonality</b>	Monoclonal
<b>Form</b>	Liquid
<b>Concentration</b>	
<b>Storage</b>	Aliquot and store at -20°C (valid for 12 months). Avoid freeze/thaw cycles.
<b>Shipping</b>	Ice bags
<b>Buffer</b>	Purified antibody in PBS with 0.05% sodium azide,0.05% protective protein and 50% glycerol.
<b>Purification</b>	Affinity Purification

**Application**

<b>Dilution Ratio</b>	WB 1:1000-1:2000,FC 1:20-1:100
<b>Molecular Weight</b>	Calculated MW: 54-73 kDa ; Observed MW: 50-70 kDa

**Antigen Information**

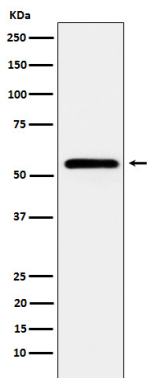
<b>Gene Name</b>	CaMKII Calcium/calmodulin dependent protein kinase II alpha; Calcium/calmodulin dependent protein kinase II beta; Calcium/calmodulin dependent protein kinase II delta;
<b>Alternative Names</b>	Calcium/calmodulin dependent protein kinase II gamma; CaM kinase II alpha; CaM kinase II; CaM kinase II beta; CaM kinase II delta; CaM kinase II gamma; CAMK2; Camk2a; CAMK2B; CAMK2D; CAMK2G; CAMKA;;pan CaMKII
<b>Gene ID</b>	
<b>SwissProt ID</b>	Q9UQM7/Q13554/Q13555/Q13557
<b>Immunogen</b>	A synthesized peptide derived from human CaMKII alpha

## Background

Calcium/calmodulin-dependent protein kinase that functions autonomously after  $\text{Ca}^{2+}$ /calmodulin-binding and autophosphorylation, and is involved in various processes, such as synaptic plasticity, neurotransmitter release and long-term potentiation. Member of the NMDAR signaling complex in excitatory synapses, it regulates NMDAR-dependent potentiation of the AMPAR and therefore excitatory synaptic transmission.

## Research Area

## Image Data



Western blot analysis of CaMKII expression in HeLa cell lysate.