
Product Name: ABI2 Rabbit Monoclonal Antibody**Catalog #: AMRe84597**

For research use only.

Summary

Description	Recombinant rabbit monoclonal antibody
Host	Rabbit
Application	WB,IHC,ICC/IF,ICC
Reactivity	Human,Mouse,Rat
Conjugation	Unconjugated
Modification	Unmodified
Isotype	IgG
Clonality	Monoclonal
Form	Liquid
Concentration	
Storage	Aliquot and store at -20°C (valid for 12 months). Avoid freeze/thaw cycles.
Shipping	Ice bags
Buffer	Purified antibody in PBS with 0.05% sodium azide,0.05% protective protein and 50% glycerol.
Purification	Affinity Purification

Application

Dilution Ratio	WB 1:1000-1:2000,IHC 1:100-1:200,ICC/IF 1:50-1:200,ICC 1:50-1:200
Molecular Weight	Calculated MW: 56 kDa ; Observed MW: 75 kDa

Antigen Information

Gene Name	ABI2
Alternative Names	Abelson interactor 2; ABI2; ABI2B; Abl binding protein 3; AblBP3; ArgBP1; ARGBPIA; ArgBPIB; SSH3BP2;;ABI2
Gene ID	
SwissProt ID	Q9NYB9
Immunogen	A synthesized peptide derived from human ABI2

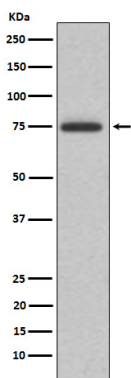
Background

Regulator of actin cytoskeleton dynamics underlying cell motility and adhesion. Functions as a component of the WAVE

complex, which activates actin nucleating machinery Arp2/3 to drive lamellipodia formation. Acts as a regulator and substrate of nonreceptor tyrosine kinases ABL1 and ABL2 involved in processes linked to cell growth and differentiation. Positively regulates ABL1-mediated phosphorylation of ENAH, which is required for proper polymerization of nucleated actin filaments at the leading edge.

Research Area

Image Data



Western blot analysis of ABI2 expression in K562 cell lysate.