

Product Name: EDG3 Rabbit Monoclonal Antibody**Catalog #: AMRe84592**

For research use only.

Summary

Description	Recombinant rabbit monoclonal antibody
Host	Rabbit
Application	WB,IHC,ICC/IF,ICC
Reactivity	Human
Conjugation	Unconjugated
Modification	Unmodified
Isotype	IgG
Clonality	Monoclonal
Form	Liquid
Concentration	
Storage	Aliquot and store at -20°C (valid for 12 months). Avoid freeze/thaw cycles.
Shipping	Ice bags
Buffer	Purified antibody in PBS with 0.05% sodium azide,0.05% protective protein and 50% glycerol.
Purification	Affinity Purification

Application

Dilution Ratio	WB 1:1000-1:2000,IHC 1:100-1:200,ICC/IF 1:50-1:200,ICC 1:50-1:200
Molecular Weight	42 kDa

Antigen Information

Gene Name	EDG3
Alternative Names	EDG3; LPB3; S1P receptor 3; S1P3; S1pr3;;EDG3
Gene ID	
SwissProt ID	Q99500
Immunogen	A synthesized peptide derived from human EDG3

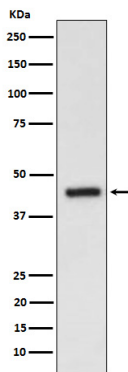
Background

Receptor for the lysosphingolipid sphingosine 1-phosphate (S1P). S1P is a bioactive lysophospholipid that elicits diverse physiological effect on most types of cells and tissues. When expressed in rat HTC4 hepatoma cells, is capable of mediating

S1P-induced cell proliferation and suppression of apoptosis.

Research Area

Image Data



Western blot analysis of EDG3 expression in HepG2 cell lysate.