
Product Name: SLC22A3 Rabbit Monoclonal Antibody**Catalog #: AMRe84590**

For research use only.

Summary

Description	Recombinant rabbit monoclonal antibody
Host	Rabbit
Application	WB,IHC,FC
Reactivity	Human
Conjugation	Unconjugated
Modification	Unmodified
Isotype	IgG
Clonality	Monoclonal
Form	Liquid
Concentration	
Storage	Aliquot and store at -20°C (valid for 12 months). Avoid freeze/thaw cycles.
Shipping	Ice bags
Buffer	Purified antibody in PBS with 0.05% sodium azide,0.05% protective protein and 50% glycerol.
Purification	Affinity Purification

Application

Dilution Ratio	WB 1:1000-1:2000,IHC 1:100-1:200,FC 1:20-1:100
Molecular Weight	Calculated MW: 61 kDa ; Observed MW: 75 kDa

Antigen Information

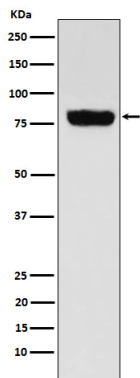
Gene Name	SLC22A3
Alternative Names	EMT; EMTH; OCT3; Orct3; Slc22a3;;SLC22A3
Gene ID	
SwissProt ID	O75751
Immunogen	A synthesized peptide derived from human SLC22A3

Background

Electrogenic voltage-dependent transporter that mediates the transport of a variety of organic cations such as endogenous bioactive amines, cationic drugs and xenobiotics.

Research Area

Image Data



Western blot analysis of SLC22A3 expression in Human muscle cell lysate.