
Product Name: SENP2 Rabbit Monoclonal Antibody**Catalog #: AMRe84582**

For research use only.

Summary

Description	Recombinant rabbit monoclonal antibody
Host	Rabbit
Application	WB,IHC,ICC/IF,ICC
Reactivity	Human
Conjugation	Unconjugated
Modification	Unmodified
Isotype	IgG
Clonality	Monoclonal
Form	Liquid
Concentration	
Storage	Aliquot and store at -20°C (valid for 12 months). Avoid freeze/thaw cycles.
Shipping	Ice bags
Buffer	Purified antibody in PBS with 0.05% sodium azide,0.05% protective protein and 50% glycerol.
Purification	Affinity Purification

Application

Dilution Ratio	WB 1:1000-1:2000,IHC 1:100-1:200,ICC/IF 1:50-1:200,ICC 1:50-1:200
Molecular Weight	68 kDa

Antigen Information

Gene Name	SENP2
Alternative Names	Axam2; Senp2; Sentrin specific protease 2; SMT3 specific isopeptidase 2; Smt3ip2;;SENP2
Gene ID	
SwissProt ID	Q9HC62
Immunogen	A synthesized peptide derived from human SENP2

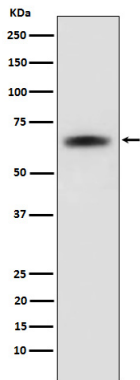
Background

Protease that catalyzes two essential functions in the SUMO pathway. The first is the hydrolysis of an alpha-linked peptide bond at the C-terminal end of the small ubiquitin-like modifier (SUMO) propeptides, SUMO1, SUMO2 and SUMO3 leading to the

mature form of the proteins.

Research Area

Image Data



Western blot analysis of SENP2 expression in 293T cell lysate.