

Product Name: Phospho-CaMKII alpha(T286) Rabbit Monoclonal Antibody**Catalog #: AMRe84575**

For research use only.

Summary

Description	Recombinant rabbit monoclonal antibody
Host	Rabbit
Application	WB,IHC
Reactivity	Mouse,Rat
Conjugation	Unconjugated
Modification	Phosphorylated
Isotype	IgG
Clonality	Monoclonal
Form	Liquid
Concentration	0.5mg/ml. The concentration of this product may be batch-dependent.
Storage	Aliquot and store at -20°C (valid for 12 months). Avoid freeze/thaw cycles.
Shipping	Ice bags
Buffer	Purified antibody in PBS with 0.05% sodium azide,0.05% protective protein and 50% glycerol.
Purification	Affinity Purification

Application

Dilution Ratio	WB 1:1000-1:2000,IHC 1:100-1:200
Molecular Weight	Calculated MW: 54 kDa ; Observed MW: 50-60 kDa

Antigen Information

Gene Name	Phospho-CaMKII alpha(T286)
Alternative Names	Camk2; Camk2a; Camk2b; CAMKA; CaMKII; CaMKIINalpha;;p-CaMKII alpha (T286)
Gene ID	
SwissProt ID	P11798(mouse)(rat:P11275)(human:Q9UQM7)
Immunogen	A synthesized peptide derived from mouse CaMKII alpha around the phosphorylation site of T286

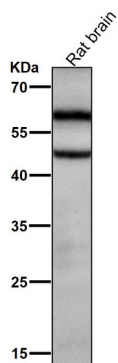
Background

Calcium/calmodulin-dependent protein kinase that functions autonomously after Ca²⁺/calmodulin-binding and

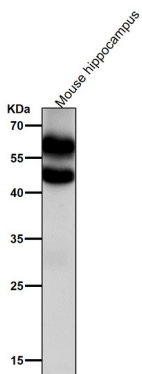
autophosphorylation, and is involved in various processes, such as synaptic plasticity, neurotransmitter release and long-term potentiation.

Research Area

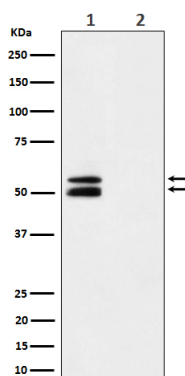
Image Data



All lanes use the Antibody at 1:2K dilution for 1 hour at room temperature.



All lanes use the Antibody at 1:2K dilution for 1 hour at room temperature.



Western blot analysis of Phospho-CaMKII alpha (T286) expression in Mouse brain treated with Lambda phosphatase cell lysate.