

---

**Product Name: WAPL Rabbit Monoclonal Antibody****Catalog #: AMRe84573**

For research use only.

**Summary**

<b>Description</b>	Recombinant rabbit monoclonal antibody
<b>Host</b>	Rabbit
<b>Application</b>	WB,ICC,IP
<b>Reactivity</b>	Human
<b>Conjugation</b>	Unconjugated
<b>Modification</b>	Unmodified
<b>Isotype</b>	IgG
<b>Clonality</b>	Monoclonal
<b>Form</b>	Liquid
<b>Concentration</b>	
<b>Storage</b>	Aliquot and store at -20°C (valid for 12 months). Avoid freeze/thaw cycles.
<b>Shipping</b>	Ice bags
<b>Buffer</b>	Purified antibody in PBS with 0.05% sodium azide,0.05% protective protein and 50% glycerol.
<b>Purification</b>	Affinity Purification

**Application**

<b>Dilution Ratio</b>	WB 1:1000-1:2000,ICC 1:50-1:200,IP 1:20-1:50
<b>Molecular Weight</b>	Calculated MW: 133 kDa ; Observed MW: 160 kDa

**Antigen Information**

<b>Gene Name</b>	WAPL
<b>Alternative Names</b>	FOE; WAPAL; WAPL; Wings apart like homolog;;WAPL
<b>Gene ID</b>	
<b>SwissProt ID</b>	Q7Z5K2
<b>Immunogen</b>	A synthesized peptide derived from human WAPL

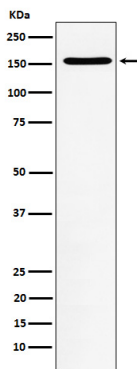
**Background**

Regulator of sister chromatid cohesion in mitosis which negatively regulates cohesin association with chromatin. Involved in both sister chromatid cohesion during interphase and sister-chromatid resolution during early stages of mitosis. Couples DNA

replication to sister chromatid cohesion. Cohesion ensures that chromosome partitioning is accurate in both meiotic and mitotic cells and plays an important role in DNA repair.

## Research Area

## Image Data



Western blot analysis of WAPL expression in Jurkat cell lysate.