

Product Name: TIMM50 Rabbit Monoclonal Antibody**Catalog #: AMRe84570**

For research use only.

Summary

| | |
|----------------------|---|
| Description | Recombinant rabbit monoclonal antibody |
| Host | Rabbit |
| Application | WB,IHC |
| Reactivity | Human,Mouse |
| Conjugation | Unconjugated |
| Modification | Unmodified |
| Isotype | IgG |
| Clonality | Monoclonal |
| Form | Liquid |
| Concentration | |
| Storage | Aliquot and store at -20°C (valid for 12 months). Avoid freeze/thaw cycles. |
| Shipping | Ice bags |
| Buffer | Purified antibody in PBS with 0.05% sodium azide,0.05% protective protein and 50% glycerol. |
| Purification | Affinity Purification |

Application

| | |
|-------------------------|---|
| Dilution Ratio | WB 1:1000-1:2000,IHC 1:100-1:200 |
| Molecular Weight | Calculated MW: 40 kDa ; Observed MW: 36 kDa |

Antigen Information

| | |
|--------------------------|---|
| Gene Name | TIMM50 |
| Alternative Names | TIM50; TIM50L; TIMM50;;TIMM50 |
| Gene ID | |
| SwissProt ID | Q3ZCQ8 |
| Immunogen | A synthesized peptide derived from human TIMM50 |

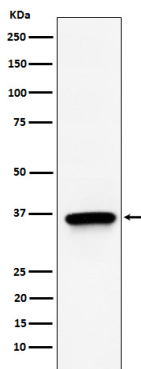
Background

Essential component of the TIM23 complex, a complex that mediates the translocation of transit peptide-containing proteins across the mitochondrial inner membrane. Has some phosphatase activity in vitro; however such activity may not be relevant in

vivo.

Research Area

Image Data



Western blot analysis of TIMM50 expression in 293T cell lysate.